



AFRICAN
PROPERTY
AWARDS

2019-2020



ARABIAN
PROPERTY
AWARDS

2019-2020

AFRICA & ARABIA'S

ARCHITECTS
DEVELOPERS
INTERIOR
DESIGNERS
AGENTS

BEST 2019-2020



QHC is highly willing and capable of undertaking the Design and Construction Supervision Works of all kinds of projects, whether Mixed Use, Hospitality, Residential, Commercial, Health Care or Industrial right from Conceptual Design up to Final Taking-Over Stage.



Dubai: +971 4 2959490

Sharjah: +971 6 5743555

qhc@eim.ae

www.qhc.ae

DISCOVER THE AFRICA & ARABIA'S BEST PROPERTY PROFESSIONALS...



Once again, our annual quest is underway to find the most innovative, imaginative and effective interior designs, developments, architectural projects and single properties. We also seek each region's most accomplished real estate agents and property consultants to determine those with the most impressive portfolios, strategic marketing and outstanding customer service.

Dubai, Africa and Arabia now have the opportunity to demonstrate their expertise and professionalism across all categories.

Following our judging panel's deliberations, here are just a few companies that have been awarded multiple international nominations: Pam Golding Properties in South Africa has won three of these coveted accolades in the categories of Real Estate Agency over 20 Offices, Marketing and Website. Uptown, a residential development in Saudi Arabia by Alkhoyool Alarabia, has won three awards, two of which are international nominations for Multiple Residence Architecture and Development Marketing. The First Group has then demonstrated its diverse ability admirably by winning four for its mixed-use project Ciel Tower in Dubai. These range from Commercial High-rise Development and Residential High-rise Architecture to Hotel Architecture and New Hotel Construction and Design.

These and many other highest scoring entrants will now compete against other equally successful companies from Europe, the UK, Asia Pacific, Canada, the USA, Central and South America and the Caribbean to determine the World's Best in each category. This year's grand final will be held on December 2nd at London's Savoy Hotel where the ultimate winners will be revealed. Visit www.propertyawards.net for further information.

Many congratulations to all those listed in this publication.

Helen Shield

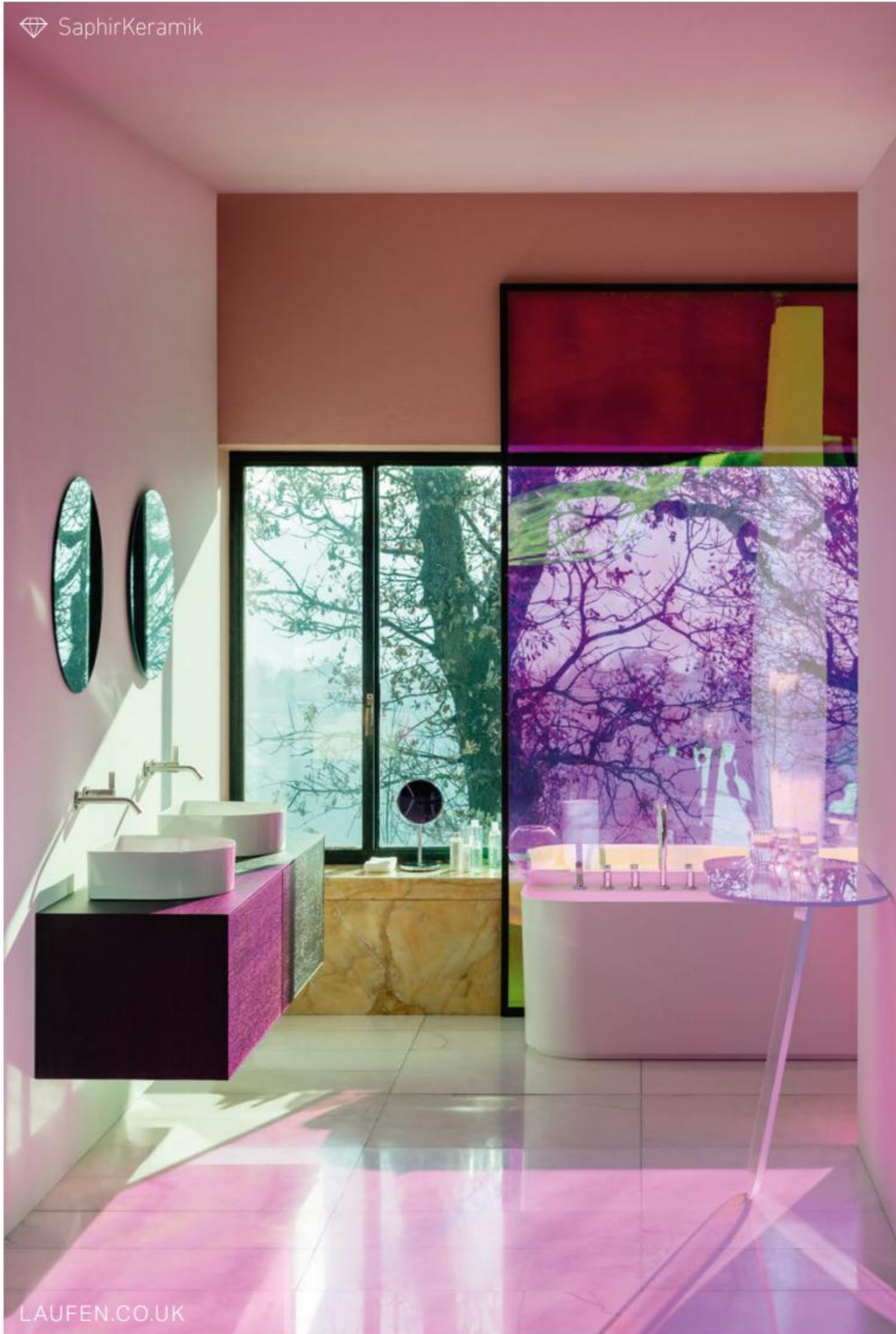
Editor-in-Chief, International Property & Travel Magazine

Index

- 06 Judges
- 08 Supporters
- 12 WA International
- 14 Kart Group FZ-LLC
- 16 Broadway Interiors
- 20 Abdul Latif Jameel Lands Co. Ltd.
- 22 Bentel Associates International,
CP Power E.A and MDM Developers
- 24 Spring Interiors Ltd
- 25 Waterfall Management Company
- 28 QHC Architects & Engineers
- 29 Al Hamra Real Estate
- 30 Balwin Properties
- 31 Jacket Interiors
- 32 Ayla Oasis Development Company
- 33 CESAF LIBERIA LTD
- 36 Masingita Properties
- 37 Hortela Design de Interiores
- 38 Prime Lands Real Estate Development
- 39 Hayer One Limited
- 40 Molders - Design & Build Limited
- 41 Mariam El Alaoui
- 42 Al Nakhla City Company
- 43 Kirei Studio
- 46 Mawad S.A.R.L for Trade and Construction
- 47 Dar Al Omran Engineering Consultants - KSA
- 48 iki design group
- 49 Arab Architects
- 50 Hatem Attiya - Darwasa Designs
- 51 NS&A
- 54 Dubai, Africa & Arabia Winners 2019-2020

LAUFEN

◆ SaphirKeramik



LAUFEN.CO.UK

COLLECTION SONAR
Design by Patricia Urquiola

The Judging Panel

The judging panel for the International Property Awards is composed of experts and experienced members across a wide range of disciplines and property-related specialities.

The Earl of Liverpool Chairman of the International Property Awards

Lord Caithness Chairman of judging for Development categories

Lord Best Chairman of judging for Real Estate categories

Peter Anscombe Senior Corporate Director, Edwardian Group

Judith Baker Writer & Editor

Kunle Barker Property Expert, Journalist & TV Presenter

Rhian Barker Design Director, Accouter Design

David Bentheim Founder, Bentheim London

Nick Bentley Founder & Creative Director, Uniform

Richard Billett Managing Director, Maisons Marques et Domaines

Li Boatwright Managing Director, Storrington PR

Peter Bolton-King Global Property Standards Director, RICS

Doreen Boulding Hotel and Leisure consultant, DMB Associates

Russell Bragg Managing Director, Bragg and Co

Xavier Calloc'h Director, Yacht Investor

Lucy Cann Contract & Luxury Manager, Dedar UK

Victoria Chazova Negotiator, Knight Frank LLP

Matthew Clare Director, Trident Building Consultancy

Andrew Cockburn Creative Director, International Property Media

Katrina Craig CEO, Hotel Solutions Partnership

Kevin Crawford Managing Director, Crawford Architectural Design Services

Geoff Cresswell Architect, RDG Planning and Design

Max Davidson Freelance Property Editor, The Telegraph

Jon Eaglesham Managing Director, Barr-Gazetas

Imtiaz Farookhi Chairman & Consultant, LAND-DATA

Nick Farrow Chairman, Farrow's

Frederick Fischer Senior Director, Lalique

Lucy Fox Director, Storrington PR

Will Gibbs Managing Director, KLC School of Design

Ian Graham The Hotel Solutions Partnership

Nishant Grover COO, Asset World Co Ltd

Jo Hamilton Owner, Jo Hamilton Interiors

Simon Hamilton Studio Manager, Reddy Architecture

Annie Hampson Chief Planning Officer & Development Director, Department of the Built Environment, City of London

Jennifer Hardi Senior Lecturer in Architectural Technology, London South Bank University

Richard Hartshorn Regional Director, NHBC

Sean Hatcher Design Director, MCM Architecture

Niall Healy Chartered Architectural Technologist & Chartered Building Engineer, CIAT

Steven Hedley Managing Director, Hedley Design

David Hind President, Asia Pacific Institute of Events Management

Justin Hogbin Interim Manager, Richard Mille Watches

Del Hossain Managing Director, Adrem

Rebecca Johnson Media and Hotel Consultant

Mike Jordan Chairman, Cornish Stairways International

Jill Keene Editor, International Property & Travel

Dawn Kitchener Managing Director, Blocc Interiors

Mia Kitsinis Design Director, Accouter Design

James Lawrence-Felton Head of Land Operations, Securewest International

Nick Lee Founder and PR Director, Niche PR

Paul Lewis Founder, Altham Lewis Architects

Roy Ling Managing Director, RL Capital Management

Hugh Lumby Partner, Head of Global Real Estate, Ashurst LLP

Duncan MacArthur Principal, Hotel Solutions

James Mattin Managing Partner, Bond Wolfe

Guy Medd Property Consultant

Shalini Misra Founder, Shalini Misra Ltd

Christian Morris Architect, Yotomo Architecture Studio

Katherine O'Shea Associate, Strategic Solutions, Coutts

Helen Oldfield Director, Affinity PR

Ed Park Director, PARKdesigned

Penny Patterson Interior Designer, Make It So Design

Gregory Phillips Owner, Gregory Phillips Architects

Hilary Philpott Director of PR/Communication, JW Marriott Grosvenor House

Richard Rawlings Estate Agency Consultant

David Reynolds Director, Bloomsbury Project Management

Philippe Rossiter Master Inn Holders

Nadya Ruvinsky International Projects, Design and Consultancy

Julien Sannier Commercial Director, Lombok

Sophie Sannier Founder, Jack & Tara

Celia Sawyer Interior Designer, Celia Sawyer Luxury Interiors

Jeanette Schuchmann Deputy Director, German National Tourist Office

Helen Shield Editor-in-Chief, International Property & Travel

Jill Starley-Grainger Editorial Director, Inscribe Content

Patrick Story Design Director, Sequoia London

Paul Tayler Consultant Valuer

Mark Taylor Area Manager, Silent Gliss

Stacey Taylor Associate, Kent Design Studio

Sue Timney Interior Designer

Tricia Topping Director, Carlyle Consultants

Paul Vick Partner, Paul Vick Architects

Dean Wade Property & Construction Group Executive, London Chamber of Commerce

John Walker Independent Planning Consultant

Andrea Watson Property Journalist

Eddie Weir Vice President Practice, CIAT

Gillian Wheatcroft Head of PR & Marketing, Janine Stone

Ed Williams Partner, Fletcher Priest Architects

Stuart Wilsdon Interior Designer

Jan Wilson President, RPW Design

Georgina Wood Head of Interior Design, Taylor Howes Designs

SUBSCRIBE FOR FREE



Get free access to every edition of International Property & Travel before it's released...
Visit www.ipropertymedia.com to register.



Partners & Associates

INTERNATIONAL
PROPERTY
& Travel

LAUFEN



THE AFRICAN
INSTITUTE OF THE
INTERIOR DESIGN
PROFESSIONS



Mauritius
Association of Architects



ASSOCIATION OF DESIGNERS OF KENYA



REAL ESTATE DEVELOPERS
ASSOCIATION - LEBANON



AFRICAN
ASSOCIATION OF
INTERIOR DESIGNERS



Pure Freude
an Wasser



FREEDOM OF CHOICE

GROHE SPA COLOURS

In a world with changing trends, we believe in timeless elegance. With a rich palette and luxurious finishing, the new GROHE Spa Colours give our customers the freedom to create their desired vision. One that never goes out of style. [grohe.asia](https://www.grohe.asia)

PART OF LIXIL

PREFERRED SUPPLIERS



GROHE is a leading global brand for complete bathroom solutions and kitchen fittings and has a total of over 6,000 employees, 2,400 of which are based in Germany. GROHE has been part of the LIXIL Group Corporation since 2014. As an international brand, GROHE pursues the brand values of technology, quality, design and sustainability, seeking to offer the “Pure joy of water”.

Innovation, design and development are closely aligned with one another and are enshrined in the German site as an integrated process. As a result, GROHE products carry the seal of quality “Made in Germany”. In the last ten years alone, GROHE has received over 300 design and innovation awards as well as several top rankings as one of “Germany’s most sustainable large brands”, confirming the success of the brand. GROHE was the first in its industry to win the German government’s CSR prize and was also featured in the renowned Fortune® magazine’s ranking of Top 50 that are “Changing the World”.



w: grohe.asia



As one of the most iconic brands in sanitary ware, American Standard has earned the trust of its customers by constantly delivering style, quality and reliability to their bathrooms.

Backed by more than 140 years of pioneering legacy, American Standard leads the way in developing purposeful bathroom solutions that continue to raise the standard of living healthily, responsibly and beautifully around the world. Placing customers at the heart of everything it does, American Standard brand combines thoughtful designs and innovative technologies to create bathroom solutions that offer ultimate hygiene, comfort, safety and convenience.

*American
Standard*

w: www.americanstandard-apac.com



GANI Ceramics Co., Ltd, founded in 2002, pioneered a new porcelain category of Marble Tiles in 2009 and has now become the world’s leading company in the marble tile industry. With over 500 items in its exclusive stone gallery, GANI develops hundreds of marble tiles reflecting unique marble patterns and veins.

The sales network covers 72+ countries including Italy, France, Russia, USA, Australia, Japan, Thailand, UAE, etc. With 600+ global franchised stores, GANI delivers its quality products and solution to world-famous hospitality, residential and commercial projects, including Hilton, Marriott and many prestigious commercial buildings.

GANI MARBLE TILES

w: www.ganimarbletiles.com

PREFERRED SUPPLIERS



Preciosa Lighting – Cultivation of Chandeliers – Since 1724

Cultivation of Chandeliers is the expression of a Bohemian crystal glass making tradition that dates to 1724. Preciosa Lighting cultivates and manufactures chandeliers, but more importantly, keeps them dynamic, ensuring they always reflect genius loci, a lifestyle, and make a statement for the future.

Preciosa has strengthened and deepened its knowledge of the characteristic properties of crystal glass to masterly perfection, producing and cultivating chandeliers according to original Bohemian traditions. The very highest standards of craftsmanship and unique technical knowledge make Preciosa one of the world's leading producers of fine crystal and glass chandeliers. Our lighting styles range from individual luxury lighting to dynamic and interactive bespoke installations. As a global company, Preciosa cooperates with renowned designers worldwide to create exclusive lights that reflect our spirit. Our historic chandeliers and contemporary projects can be found in hotels, resorts, fine restaurants, palaces, cultural institutions and on board yachts and cruise ships in locations as varied as New York, Hong Kong, Singapore, Dubai, Moscow and London.

PRECIOSA

w: www.preciosalighting.com



Redefining the future of access.

Designed to value-add to your properties, igloohome offers a suite of devices and software to help you strategically manage access over your property or business space. Our access management solution is customised to your needs to make property management simpler, safer, smarter. Manage multiple locks on one centralised dashboard and we also provide APIs and SDKs for seamless third-party integration.

Our products work offline so there are no worries about WiFi hacking or disruption. Unlike other bluetooth smart locks, users also do not need to download an additional app to unlock the door as our unique PIN code system uses technology similar to the banking token's OTP.

igloohome products have been rolled out to over 90 countries, to great reviews. Our products have received the CES Asia 2017 & 2018 Innovation Honoree Award (IoT), and our Keybox been featured in The Huffington Post as 'Best Tech Products of CES 2017', and GQ's 'The Best Stuff of 2017'.

igloohome

w: www.igloohome.co



With its 10 production plants in Germany, France, Italy, China and the USA, KME is one of the world's largest manufacturers of copper and copper alloy products. As a leading supplier for the building industry, KME offers a broad spectrum of outstanding product solutions in copper and copper-alloys for roofing and cladding under its brand TECU.

The decision to design building cladding with copper leaves plenty of opportunities for creativity. Durable TECU® copper products from KME offer many unique possibilities. The striking natural surfaces in copper and copper alloys allow for singular design. Prefabricated system elements offer a wide range of solutions, from free-form designs to the simple and economic cladding of larger areas. TECU® products for external cladding of buildings are manufactured exclusively from copper and copper alloys. Thus, the idea of sustainability is "in their very nature".

KME

w: www.kme.com



Jumeirah Royal Saray Bahrain



ESTABLISHED IN 1993, WA International is a Dubai-based interior design studio which is renowned for creating exquisite interiors for the hospitality market. The company has established an enviable clientele with longstanding relationships reflecting its superlative performance and commitment to unique interiors. The two award-winning projects featured here are prime examples of WA International's attention to detail and expertise.

Jumeirah Royal Saray Bahrain is a highly luxurious five-star hotel offering 174 guestrooms, four Royal Residences, a spa, gym and restaurants. The exterior of the building was inspired by the Andalusian Moorish style of architecture, while its interiors embrace a contemporary Arabic design. They have

been designed to reflect both the abundant pearl diving waters of the Gulf as well as the stunning patterns seen in the vernacular architecture and its detailing.

WA International's greatest influence for this project was from Sheikh Isa Bin Ali Al Khalifa's beautiful heritage home with its intricate Bahrani patterns. These wonderful layers of complex designs have been etched in rows in marble, wood, plaster and on glass. The overall colour scheme of the hotel features luminous marble and pearlescent specialist paint finishes. Almost white chenille fabrics have also been selected to further reference Bahrain's lustrous pearling industry. Royal blue and purple accent cushions are then added to provide a pop of colour throughout the interiors to great effect.

★★★★★ BEST HOTEL INTERIOR BAHRAIN Jumeirah Royal Saray Bahrain by WA International



Hyatt Regency Addis Ababa

The new Hyatt Regency Addis Ababa is located off Meskel Square which is the centre of the city, connecting artery roads to the heart of the capital. Within walking distance of the United Nations Conference Centre, the Hyatt Regency offers something not seen before in Addis Ababa: luxury with a design rooted in history, nature and the people of Ethiopia.

The property offers 188 keys including Regency Suites and Royal Suites, an all-day dining and speciality restaurant, wellness centre and state-of-the-art fitness centre, an outdoor heated swimming pool and exquisite landscaped areas. The client's brief was to create a five-star hotel with modern amenities, contemporary in design with a sense of location and Ethiopian pride. Catering primarily for the delegates of the African

Union and other diplomatic summits, the hotel had to provide a unique experience.

When translated, Addis Ababa means new flower and so WA International created a multi-faceted concept with inspiration from nature. The lily, which is the national flower of Ethiopia, contrasting landscapes of the country's vast highlands, valleys, rivers and the source of the Blue Nile have all helped to shape the design concept. Bird colours and characteristic feather markings also transcend conceptually into the interiors in a subtle and sophisticated approach. Last but not least, woven into the concept are beaded Ethiopian jewellery, indigenous body painting adornment and traditional Tibeb fabrics. The ensuing interiors have not only met all the necessary requirements but also created a truly exceptional guest experience.



WA International

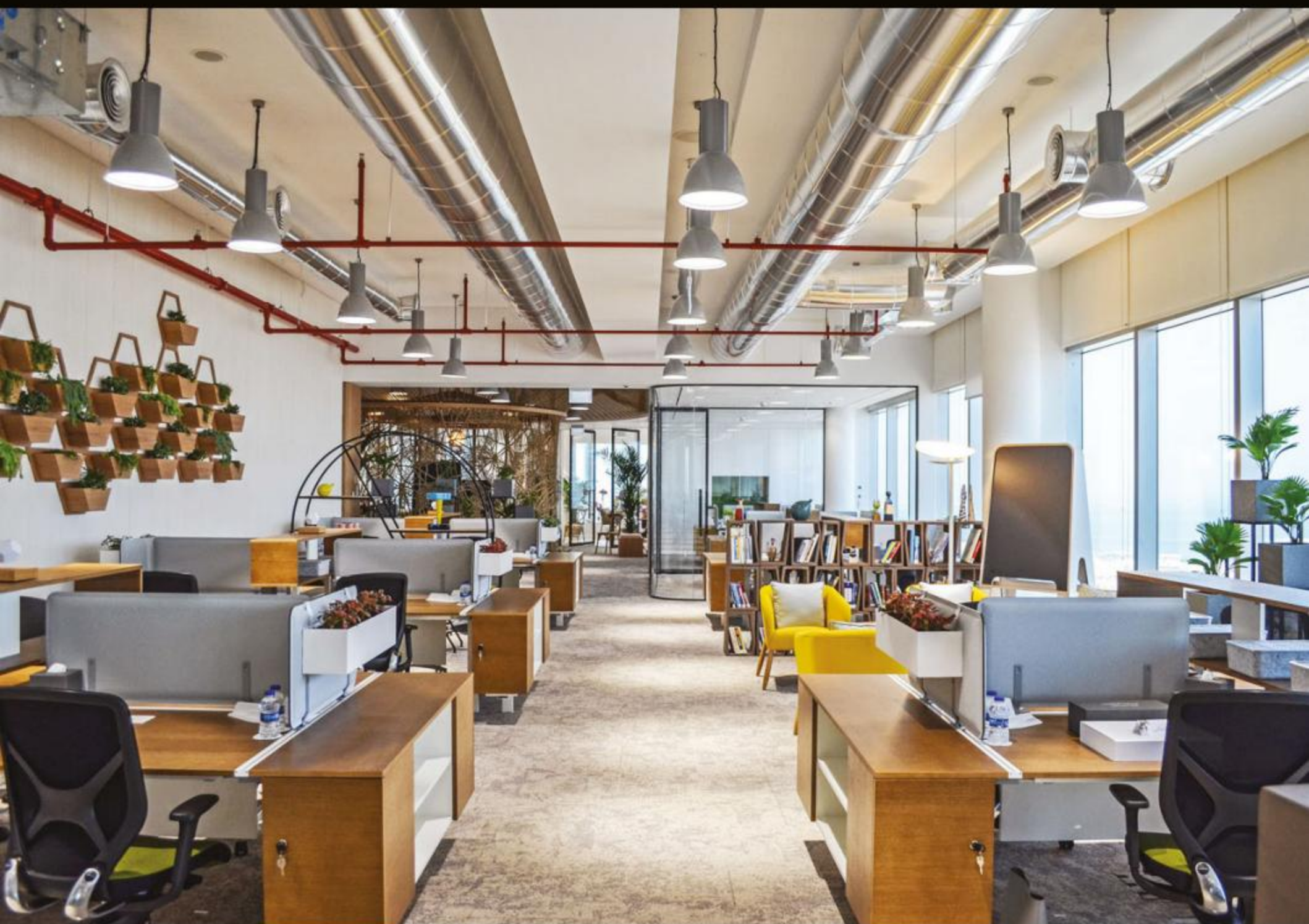
1st Floor NGI Building
Port Saeed, Dubai
United Arab Emirates

t: +971 4 266 3050

e: info@wai.ae

w: www.wa-international.com

Award Winner HOTEL INTERIOR ETHIOPIA Hyatt Regency Addis Ababa by WA International



ESTABLISHED IN THE UAE since 2005, Kart Group has become renowned for providing the highest quality modern design and services. The company collaborates closely with its clients to realise their aesthetic ideas and practical needs while adhering to their established budgets.

Kart Group firmly believes that interior design is much more than being 'just about space'. Interior design is about finding creative design solutions for interior environments while supporting the health, safety and well-being of occupants and enhancing their quality of life. While elegance and uniqueness is the company's first objective, its utmost pride comes from the fact that every environment Kart Group reflects the personality of the owner, making no two projects the same.

The firm's award-winning interior design for the General Secretariat of the Cabinet

in Dubai was created to form a distinctive working environment. Featuring the local heritage of the past and the multi-cultural diversity offered in the present, the translation of these notions through design convey an idea of movement and dynamic activities. Feng Shui interior design principles have also been carefully included to provide a vital work space and a positive energy perspective throughout the building.

Bespoke artworks were specifically designed to customise the décor, celebrating Dubai patriarchy figures and the vitality of emblematic symbols. For example, the profile of Sheikh Zayed bin Sultan Al Nahyan is incorporated via the implementation of a creative installation of gradient colours superposed on different layers. This image has been designed to be visible from one angle while displaying an abstract artwork from another.



Many of the components of the offices' interior design portray an industrial style but used in an elegant way. These include open spaces, weathered wood, metal grids, concrete building systems, exposed industrial lighting and ceiling fixtures. Diverse exotic plants, strawberry shoots, colourful fixtures and patterns on modular plant pots reinforce the energy flow and encourage playfulness, productivity and enthusiasm amongst staff members.

One of the many highlights of the offices' interior design is a central preserved tree with a clear mirror symmetrically installed above on the ceiling and below on the floor. This creates an infinite reflection, grounding the roots of the boundless development and growth of the United Arab Emirates. The Gallery Lounge is a creative, hand-made installation of marine ropes forming a semi-enclosed structure with seating inside. The twisted net of natural jute

represents the Dyveen, a woven bag that pearl divers used to hang around their necks to save their treasures.

The overall interior design of the General Secretariat of the Cabinet revisits the standard codes of a conventional and corporate environment. The executive wing was designed with luxurious marbles, wood and clean lines and provides comfortable Majlis lounges within the convenience of the work space. On the other side of the building, the general staff areas are designed in contrast featuring a more contemporary, industrial and playful design. Multicolour accents and zones stimulate a friendly and creative atmosphere including a tropical lounge surrounded by exotic plants. By introducing nature into the built environment through biophilic design, an investment has been made into the employees' health, well-being and performance.



Kart Group FZ-LLC

Dubai Design District
 Bldg. 1B Unit 101, P.O. Box: 122110
 Dubai, UAE
 t: +971 4 564 6422
 f: +971 4 564 6082
 e: info@kartgroup.net
 w: www.kartgroup.net



ESTABLISHED IN 1999, Broadway Interiors specialises in unique solutions across the F&B/hospitality, office, government, leisure and residential sectors. Its award-winning leisure interior project 'Crank' is Dubai's newest and most exciting spin studio. This modern space is underpinned by a strong, trendy design vernacular and attracts young professionals in the region.

Crank's cutting edge, professional sound system and neon lighting creates a high energy, high impact fitness experience unlike any other. Serious fitness enthusiasts are able to take full advantage of tracking and maximising their physical performance while enjoying a highly motivating, electric atmosphere. By creating a V-shaped elevated stage for the instructor in a central position, all riders are provided with a

strong connection and sense of togetherness throughout the class.

One of the most important aspects of Broadway Interiors' design has been the mezzanine floor. This exceeds the client's expectations by providing an additional revenue generating fitness and yoga space. Facilities include well-equipped changing rooms with ample showers and lockers as well as a café and chill-out lounge for socialising.

Recycled features such as bikes on the wall, wooden crates hanging on chains, logs and recycled pipes for hanging rails to display Crank merchandise add to the studio's character, storage, revenue and branding opportunities. Bespoke mesh storage and lockers add to the overall industrial aesthetic whilst doubling up as seating, while custom made mirrors framed with mesh continue the theme throughout.

Broadway Interiors

1512 Grosvenor Business Tower
 PO Box 31644, Barsha Heights, Dubai, UAE
 t: +971 4 450 8546
 e: sales@broadwayinteriors.com
 w: www.broadwayinteriors.com

Award Winner LEISURE INTERIOR DUBAI Crank by Broadway Interiors



LOCK
STOCK
&
BARREL



ASIA-ASIA
RESTAURANT & LOUNGE



BLACK TAP
CRAFT BURGERS & SHAKES

BROADWAY
INTERIORS

INTERNATIONAL AWARD WINNING DESIGN

Broadway consistently develop original, innovative designs creating highly successful, forward thinking spaces. We push the boundaries in intelligent design delivering over 800 successful, iconic F&B outlets and Commercial projects worldwide.

sales@broadwayinteriors.com
tel: +971 4 450 8546 web: www.broadwayinteriors.com







BEST INTERIOR DESIGN PRIVATE RESIDENCE SOUTH AFRICA
Worker's Cottage Cape Town by Jacket Interiors





**Abdul Latif
Jameel Lands Co. Ltd.**

Jeddah, Saudi Arabia
t: +966 508 051 028
e: info@jonerresidence.com
w: www.jonerresidence.com

BASED IN JEDDAH, Abdul Latif Jameel Lands has won an award for its latest project J One. This pioneering residential development for both Abdul Latif Jameel Lands and Saudi Arabia is part of a key milestone in delivering the residential goals identified in the Saudi Vision 2030. The vision is built around three goals, a vibrant society, a thriving economy and an ambitious nation.

Located just 10km from King Abdul Aziz International Airport and close to the business district, retail centres, international schools and the Red Sea coast. J One sets itself apart from other residential complexes by providing high quality, comfortable and modern apartment living for its residents.

The development is composed of six main buildings over five floors with 242 apartments ranging from one to four bedrooms, including a penthouse. A step inside reveals bright and airy accommodation, tastefully decorated throughout with light wood and porcelain flooring. Beautifully landscaped gardens, including a roof garden are perfect for residents to relax and unwind after a busy day.

Stunning, modern communal facilities are also housed within the complex and these include a swimming pool, health club, cinema, beauty salon and nursery to name a few. J One has set the standard high for compound living by encouraging interaction between the tenants, who share common interests to create an integrated and vibrant community.

Award Winner RESIDENTIAL DEVELOPMENT SAUDI ARABIA J One Residence by Abdul Latif Jameel Lands Co. Ltd.

J

J | O N E

THE PREMIER RESIDENTIAL DEVELOPMENT BY

Abdul Latif Jameel 
LAND

www.aljland.com



Bentel Associates International

1st Floor, BDO Building,
The Wanderers Office Park,
52 Corlett Dr, Illovo, Sandton
2196, South Africa
t: +27 10 590 7900
f: +27 10 590 7922
e: bentel@bentel.net
w: www.bentel.net

FOUNDED IN SOUTH AFRICA in 1960, Bentel Associates International (BAI) is a well-established, award-winning architectural practice, based in Johannesburg (South Africa), and Mumbai and Bangalore (India). The practice has developed over the years into a leading emerging market professional architectural firm, providing innovative and practical solutions for the built environment across Africa, India and the Middle-East. Inclusive of architectural, master planning, interior design, store-planning and green building services, BAI's expertise covers multiple sectors, including retail, office, residential, hospitality, mixed-use, education, healthcare and infrastructural projects.

Grandview Addis is an award-winning, landmark mixed-use development located in Bole sub-district, a prime area in Addis Ababa City. Here the most iconic, historical and prestigious establishments including foreign

missions and international organisations can be found. The project is being implemented by MDM Developers, a subsidiary of CP Power E.A which is a leading market player in real estate, construction and project management in the Eastern Africa region. With architecture and interiors by BAI, it has been designed to be a landmark differentiator in the market.

Comprising of 700m² of retail, 5,000m² of office space, it also includes three residential towers which are separate, yet intrinsically linked. These towers range from 13 to 16 storeys high and contain a total of 182 luxury apartments – 24 studios, 47 one-bedroom, 50 two-bedroom, 56 three-bedroom and five penthouse apartments.

The basis of the development's design was influenced primarily by context, orientation, topography, certain pre-determined site parameters and a sensitivity to how it



responded to the surrounding urban fabric. Consequently, the office building has been located along the highest point, addressing the road side in a sculptural form whilst also creating an active edge and entrance to the site. Slightly north of this is the piazza which is framed by a split-level retail offering.

The overall design has been multi-layered with an emphasis on the horizontal progress of functionality. Thus, the architectural language of the office building is one of an iconic form, introducing a slightly 'wavy' and curvilinear form to articulate and provide a contrast between itself and the adjacent geometric residential buildings.

Externally, the buildings are modern and simplistic with clean lines. They feature a combination of concrete finishes, timber composite, plaster and glazed curtain walls. Natural lighting has been encouraged via large apertures, whilst aluminium louvres will be

used on the southern façade of the building to enhance its aesthetics and reduce glare and sunlight penetration.

Spaces between the buildings are landscaped to form an attractive pedestrian interface including the piazza, terraces between the three buildings and the floodplain zone between the site's boundary and the water's edge. A communal pool and clubhouse are conveniently located between the two and three-bedroom buildings.

Grandview Addis is capitalising on an urgent and growing demand for high-end, secure, luxury housing and offices in a city that hosts over 130 diplomatic missions, multinationals and a fast-growing number of young professional and upper-middle class residents. Comprising an intricate mix of living, shopping, working, leisure and visiting, the project's palatial design embraces light and shadow, rising over the city to create a silk lining of architectural marvel.



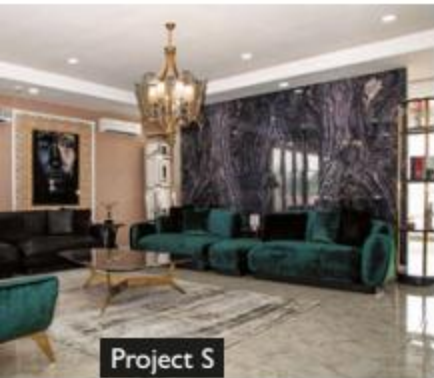
2019-2020

CP Power E.A

Keystone Park, Riverside Drive,
P.O. Box 1550-00621, Nairobi, Kenya
t: +254 735 337 841
e: info@cppowerea.com
w: www.cppowerea.com

MDM Developers (Ethiopia Office)

Rwanda Street, Bole Sub-site
P.O.Box 100715, Addis Ababa
t: +251 911 512 778
e: info@grandviewaddis.com
w: www.grandviewaddis.com



Project S

Project A



BASED IN NIGERIA, Spring Interiors is a one-stop interior design company dedicated to providing its clients with creative concepts and high-quality design. The first of the company's two latest award-winning designs is Project S, a world-class retail store. The client's brief required space for each item to be showcased beautifully in a calming colour palette.

Spring Interiors used a variety of different dividers to complement the goods featured alongside. These elements helped to avoid monotony and included some divisions made of marble to give a rich ambience to the store. The ceilings were given an intricate design to provide an additional point of attraction while 3-D wallpaper offers fabulous textures. Careful attention was also paid to designing effective lighting

throughout the store, enhanced by natural daylight through large windows.

Project A involved the complete interior design makeover of a residential property in just five weeks. The client wanted to make optimum use of the available space and also placed great importance on the textural appearance of the walls and ceilings. Therefore, Spring Interiors applied carefully selected wallpapers, screeds and textural paints to each designated area. Contrasting textures have also been added to certain sections of walls to give a dominant feature. The master bedroom includes mood lighting on the ceiling, reflective floor tiles and the use of gold enhancements to exude a touch of royalty to the room. Quality furniture, furnishings and fittings were also chosen throughout to suit the class of home being designed.

Spring Interiors Ltd
 Plot 116, 3rd Avenue, Gwarimpa,
 Abuja, Nigeria
 t: +234 809 176 0424
 t: +234 803 131 0821
 e: info@springinteriors.ng
 w: www.springinteriors.ng

★★★★★ BEST RETAIL INTERIOR NIGERIA Project S by Spring Interiors Ltd

Award Winner INTERIOR DESIGN PRIVATE RESIDENCE NIGERIA Project A by Spring Interiors Ltd



WATERFALL MANAGEMENT COMPANY has won two awards for Waterfall, the largest mixed-use development in Africa as well as the largest property development in South African history. It will ultimately combine over 28,000 residential units with approximately 2.5 million square metres of GLA for commercial, retail and office space.

Located on a 2,200-hectare tract of land in Gauteng, Waterfall is extraordinary in the sense that it is a 'greenfield' development, unaffected by the constraints of older developments and existing infrastructure. This has allowed developers and planners to create a new city from a blank slate, utilising the latest

urban design principles for infrastructure, services, open public spaces and the buildings themselves, all within the development's secure perimeter. With both a hospital and a cemetery on site, Waterfall is literally a 'cradle-to-grave' development, where a community of diverse individuals can live, work and play in an environmentally conscious and technologically advanced haven.

The development's aim from its outset 26 years ago was to raise the benchmark for urban design on both a local and international level and to remain on the forefront of innovation. Having been named the World's Best Mixed-Use Development for the last two years, it seems as if Waterfall is achieving this goal.



Waterfall

Management Company

Ad Outpost Building, Woodmead North Office Park, 54 Maxwell Drive, Waterfall, Johannesburg, South Africa

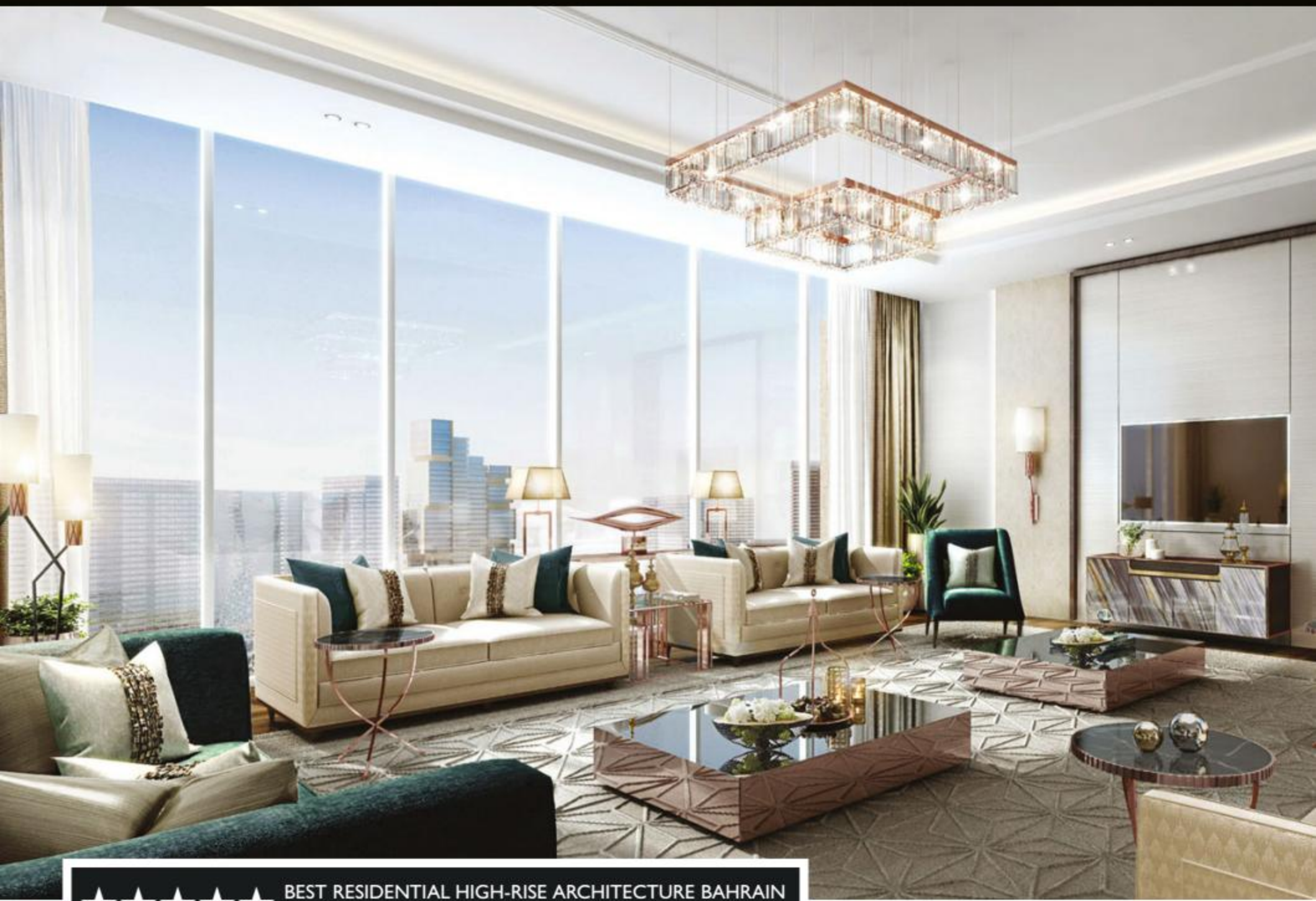
t: +27 11 253 9222

e: info@waterfall.co.za

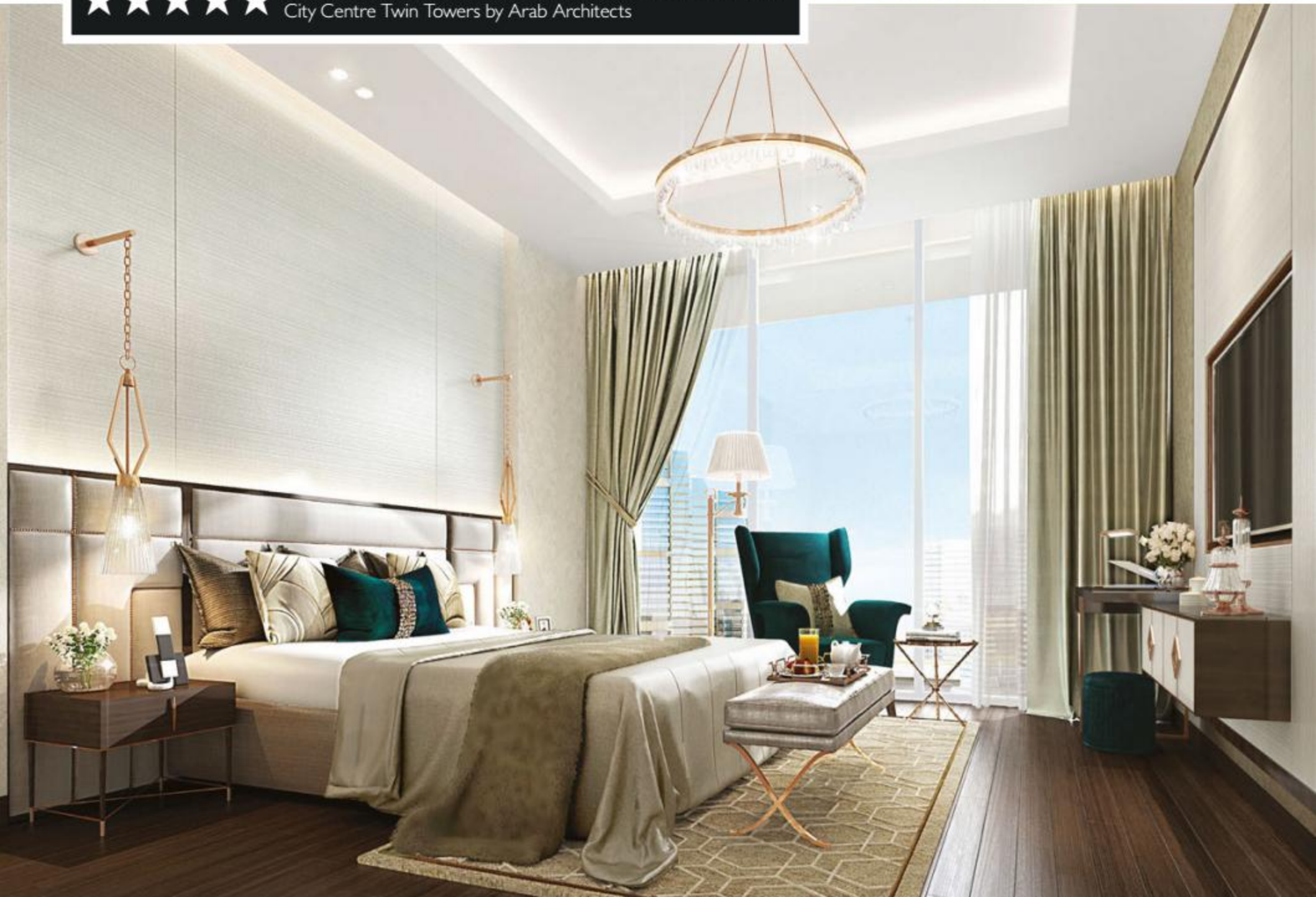
w: www.waterfall.co.za

★★★★★ BEST MIXED-USE DEVELOPMENT SOUTH AFRICA Waterfall by Waterfall Management Company

Award Winner MIXED-USE ARCHITECTURE SOUTH AFRICA Waterfall by Waterfall Management Company



BEST RESIDENTIAL HIGH-RISE ARCHITECTURE BAHRAIN
City Centre Twin Towers by Arab Architects







J-One Mixed Use Residential Complex



Sheraton Sharjah Beach Resort & Spa



QHC Architects & Engineers

Dubai, United Arab Emirates
 P.O. Box 2089
 t: +971 4 2959490
 Sharjah, United Arab Emirates
 P.O. Box 65000
 t: +971 6 5743555
 e: qhc@eim.ae
 w: www.qhc.ae

ESTABLISHED IN DECEMBER 2004, QHC Architects & Engineers operates through offices in Dubai and Sharjah and has won awards for two of its latest projects featured here. The first project, J-One, is a mixed-use residential complex located in the Downtown Burj Khalifa district of Dubai.

Named after the most elegant and valuable type of pearl found in the UAE, the project features two high-end residential towers. J-One's striking design concept mimics the dynamic lines and rugged strength of an oyster shell which contains a lavish and beautiful pearl at its heart. The development includes public and private swimming pools, fountains, shaded seating areas, state-of-the-art gym facilities, an attractive panoramic sky restaurant and roof gardens facing the canal wharf and three levels of secure basement car parking.

The second project, the five-star Sheraton Sharjah Beach Resort & Spa, faces the Arabian Gulf with beachfront infinity pools, modern Arabic landscaped areas, children's pool and playgrounds. The hotel offers 349 rooms of different sizes including a lavish Presidential suite with private pool and roof gardens. Four restaurants suit every taste, while banquet halls and meeting rooms meet all needs of business guests.

QHC has included highly detailed architectural elements throughout its design featuring many ornamental and decorative external and internal works created by specialised artists. By integrating traditional symbols and details with modern forms and ideas, the Sheraton Sharjah Beach Resort & Spa exudes a true sense of grandeur to meet 21st century heights of hospitality.

Award Winner ARCHITECTURE MULTIPLE RESIDENCE DUBAI J-One Mixed Use Residential Complex by QHC Architects & Engineers

Award Winner HOTEL ARCHITECTURE SHARJAH Sheraton Sharjah Beach Resort & Spa by QHC Architects & Engineers



BASED IN KUWAIT CITY'S bustling business district, Al Hamra Real Estate Company provides premium shopping, culinary, entertainment and office space experiences of the 21st century through a forward-thinking mindset, cutting edge technology and personalized services. Its iconic Business Tower, at 413 metres high, remains the tallest tower and a modern landmark of timeless elegance in Kuwait. Designed by Skidmore, Owings & Merrill LLP, the Tower is a recipient of 10 international awards, including an impressive trio of world records for the tallest carved concrete tower, first asymmetrical skyscraper; and tallest stone clad tower. The design inspiration for its stunning asymmetrical form came from a desire to maximise the views of the Arabian Gulf, while minimising solar heat gain.

Calling to mind the traditional robes worn by Kuwaitis, the tower is an iconic symbol of contemporary Kuwait, heralding a new era of development and prosperity in the country. Like an enshrouded figure with its delicate glass veil, the apex of the tower with its carved flared walls depicts a continuation of the sculptural form infinitely upward. The results reveal a rich, monolithic stone at the south wall framed by the graceful, twisting ribbons of torque walls, which define the iconic form of the tower.

Al Hamra Business Tower has created a modern office space environment specifically designed to meet the highest international standards, revolutionising the way work is executed in the new age and forming 'the' business hub par excellence in Kuwait.

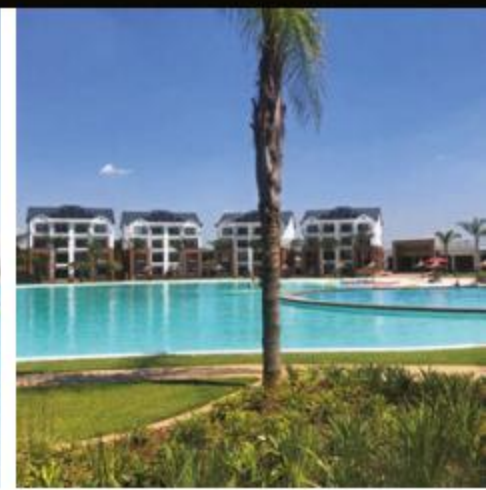


Al Hamra Real Estate
 P.O. Box 83 Safat, 13001 Kuwait AlSharq,
 Block 8, The crossroads of Jaber AlMubarak
 Street and AlShuhada'a
 t: +965 182 9000
 f: +965 222 33 050
 e: info@alhamra.com.kw
 w: www.alhamra.com.kw

★★★★★ BEST COMMERCIAL HIGH-RISE DEVELOPMENT KUWAIT Al Hamra Business Tower by Al Hamra Real Estate
 ★★★★★ BEST COMMERCIAL HIGH-RISE ARCHITECTURE KUWAIT Al Hamra Business Tower by Al Hamra Real Estate



Ballito Hills



The Blyde Riverwalk Estate



BALWIN PROPERTIES IS a multi-award winning company that designs, builds, markets and sells high-quality residential apartments throughout South Africa. Its Ballito Hills development is a secure 1,320 apartment estate with an array of world-class facilities.

Meeting all demands for 21st century living, everything from the design of the apartments to the appliances fitted are practical, sleek and modern as well as convenient for residents. Apartment 37 is one of the premium options within Phase 1 and features two bedrooms and bathrooms, open-plan living, private patio, sleek interior design and fabulous mangrove forest views.

The Blyde Riverwalk Estate is located in the rapidly expanding suburbs East of Pretoria in Gauteng. It is the first development to bring

the beach to Pretoria, creating a water-lover's paradise by incorporating a Crystal Clear Lagoon for swimming, kayaking and paddleboarding. With open park areas, picnic sites and biking trails, The Blyde also includes an on-site Lifestyle Centre. This provides Wi-fi, Amici restaurant, CSPA Wellness Spa by Camelot, a cinema and games room, function room, boardroom and concierge service. This exclusive development also offers one, two and three-bedroom apartments with private gardens for ground floor units and private balconies for all those above.

The company's award-winning website www.balwin.co.za provides a user-friendly, fully comprehensive hive of information regarding all of its projects with functions for 3-D property tours, virtual site maps, e-brochures and location maps.

Balwin Properties

Block I, Townsend Office Park
No 1 Townsend Avenue, Bedfordview
Johannesburg, South Africa
t: +27 11 450 2818
w: www.balwin.co.za

- ★★★★★ BEST APARTMENT/CONDOMINIUM SOUTH AFRICA Ballito Hills by Balwin Properties
- ★★★★★ BEST LEISURE ARCHITECTURE SOUTH AFRICA The Blyde Riverwalk Estate by Balwin Properties
- Award Winner LEISURE DEVELOPMENT SOUTH AFRICA The Blyde Riverwalk Estate by Balwin Properties
- Award Winner DEVELOPER WEBSITE SOUTH AFRICA www.balwin.co.za by Balwin Properties



Worker's Cottage Cape Town



Four Seasons Hotel - Westcliff



ESTABLISHED IN 2006, Jacket Interiors derives its name from a fusion of the first names of the founders, Jacci Samios and Ockert Dixon. The company has been successful in winning awards for the two following projects.

Worker's Cottage Cape Town is a newly renovated 100 year-old property with a large, seamless extension. The new owner wanted to make some small tweaks to elevate the final look and create a relaxed home that still retained a sense of style. Overall, the chosen interior design features grey shades offset by touches of black, white and teal. By using the same colours throughout the house, Jacket Interiors has provided a perfect backdrop for the client's art collection. By updating

the flooring and lighting and creating a new dressing room area, the property's value has significantly increased.

Jacket Interiors was also commissioned to redesign the interiors of an iconic hotel in Johannesburg when it changed ownership to become the Four Seasons Hotel – Westcliff. The brief was to give it a sense of place and tell a story of the city and of South Africa. Every area including all bedrooms and suites, the entrance lobby, new spa, ballroom building and new deli coffee shop were refurbished. Three elegantly contemporary room types were created exuding an essence of Africa. The restoration of existing pieces of furniture also gives a feeling of a home that is lived in resulting in colonial meets contemporary appearance.



Jacket Interiors

The Media Mill, 1st Floor Despatch Building,
7 Quince Str, Milpark
P O Box 41841, Craighall, 2024
Johannesburg, South Africa
t: +27 11 646 3505
e: info@jacketinteriors.com
w: www.jacketinteriors.com

★★★★★ BEST INTERIOR DESIGN PRIVATE RESIDENCE SOUTH AFRICA Worker's Cottage Cape Town by Jacket Interiors

Award Winner HOTEL INTERIOR SOUTH AFRICA Four Seasons Hotel - Westcliff by Jacket Interiors



Hyatt Regency Aqaba Ayla Resort



B10 Beach Club - Ayla Oasis



Beach Apartments - Ayla Oasis



Ayla Oasis Development Company

36 Sharif Hussien Bin Ali Street
 Astra Plaza, 6th Floor
 P.O. Box: 83 Amman 11118, Jordan
 t: +962 6 460 2600
 f: +962 6 461 2325
 e: info@ayla.com.jo
 w: www.ayla.com.jo/en

AYLA OASIS Development Company is one of the largest real estate development companies in Jordan. Its latest trio of awards includes the Hyatt Regency Aqaba Ayla Resort in the impressive Marina Village with 913m² of flexible event and meeting space. Each of the hotel's 286 guestrooms and suites have been designed to offer picturesque views of the azure lagoons, mountains and surrounding marina. Guests can take advantage of a myriad of retail, dining and entertainment venues and Jordan's first 18-hole golf course designed by Greg Norman.

B10 Beach Club – Ayla Oasis consists of a design concept inspired by the territorial morphology of Aqaba's surroundings. The project was designed to be sympathetic and well-integrated, taking in the silhouettes and colours of the mountains as its main

characteristics. Its main attraction is a spiral tower which recalls ancient architectures and allows natural light to reach the interiors, providing natural air ventilation and good sound insulation. The other buildings, furnishings and surroundings have then become part of a unified, interrelated composition.

Beach Apartments – Ayla Oasis is part of the mixed-use community's objective to create offerings for various segments of the market. These beachfront properties have been developed cost effectively, while still paying homage to the architectural integrity of Ayla and the brand's quality. This new segment will be amongst the few properties available for purchase on Jordan's waterfront. Architecturally, these residential units have an eclectic style of flat roof with stucco blue walls, achieving a modern and sleek look.

- ★★★★★ BEST NEW HOTEL CONSTRUCTION & DESIGN JORDAN Hyatt Regency Aqaba Ayla Resort by Ayla Oasis Development Company
- ★★★★★ BEST LEISURE DEVELOPMENT JORDAN B10 Beach Club - Ayla Oasis by Ayla Oasis Development Company
- ★★★★★ BEST RESIDENTIAL DEVELOPMENT JORDAN Beach Apartments - Ayla Oasis by Ayla Oasis Development Company



CESAF LIBERIA LTD aims to contribute to the African continent's great economic opportunities in order to transform the entire area into an example of sustainable and constant growth. The company intends to transmit its know-how while respecting local traditions and peculiarities, with a view to enhancing the development, wellbeing and progress of the local population.

Experience in the field confirms to Cesaf Liberia Ltd that, thanks to a specific teaching method – created with great attention – impressive growth can be achieved. The most important component to reach this goal is the appropriate use of cutting-edge technologies and tools. This aspect is of the utmost importance in order to stand out in terms of quality and professionalism. By investing

in the local population and their abilities, Cesaf Liberia Ltd is committed to the future prosperity of the area and its people.

The company's award-winning project, Executive Headquarters, is an eight-storey building for the management and staff of the National Social Security & Welfare Corporation (NASSCORP). The building's architectural design is completely new for Monrovia's skyline. It features six columns on the main facade which are connected by six-metre long shading devices. This element provides an original, elegant and beautiful look to the building. Inside, it is equipped with the most efficient and modern technological systems to meet the needs of a 21st century office environment including a stunning panoramic glass elevator.



2019-2020

CESAF LIBERIA LTD

Off-Sinkor Old Road, Old Open Bible School

Monrovia, Liberia

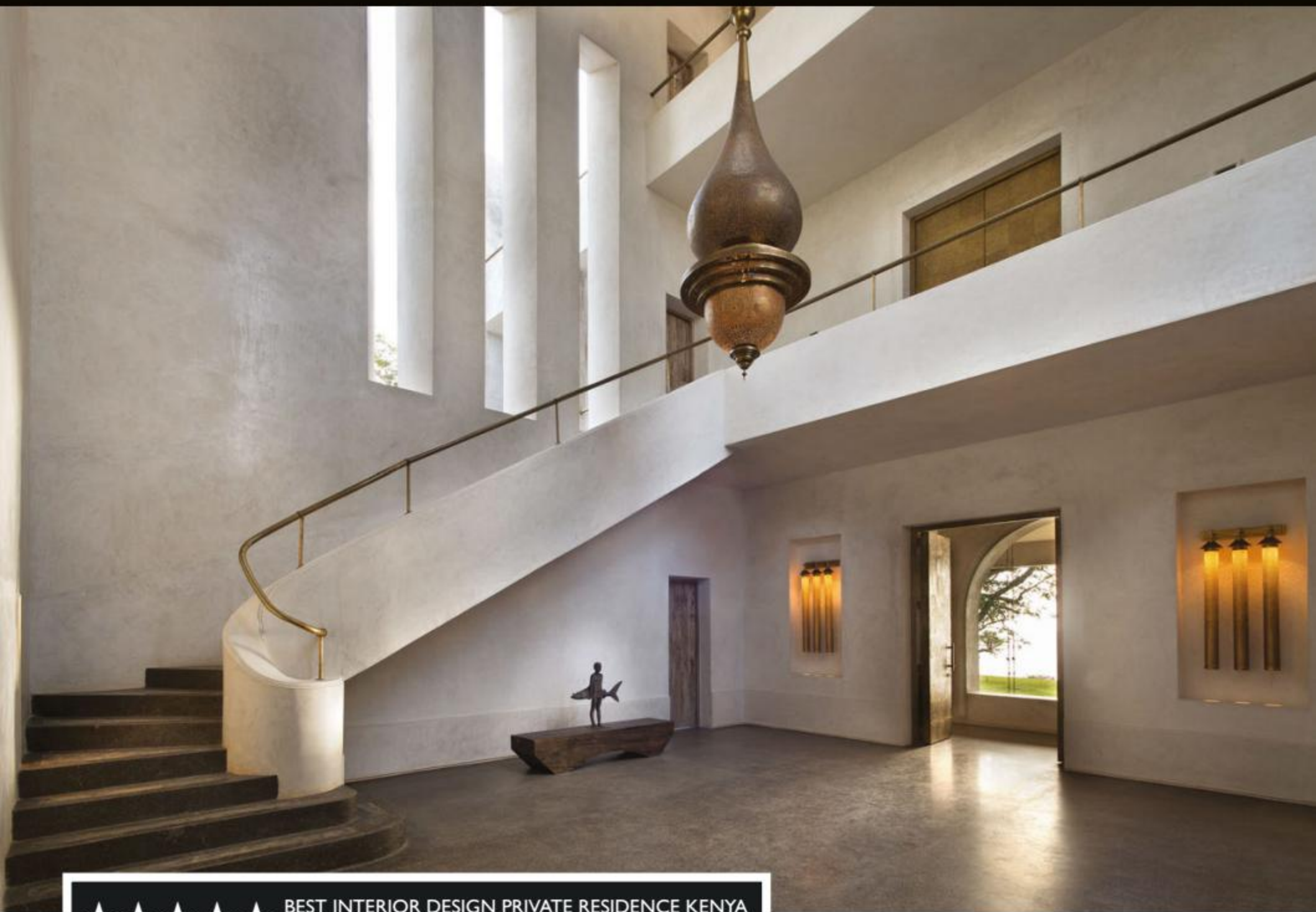
t: +231 777 944 944

t: +39 348 870 8496

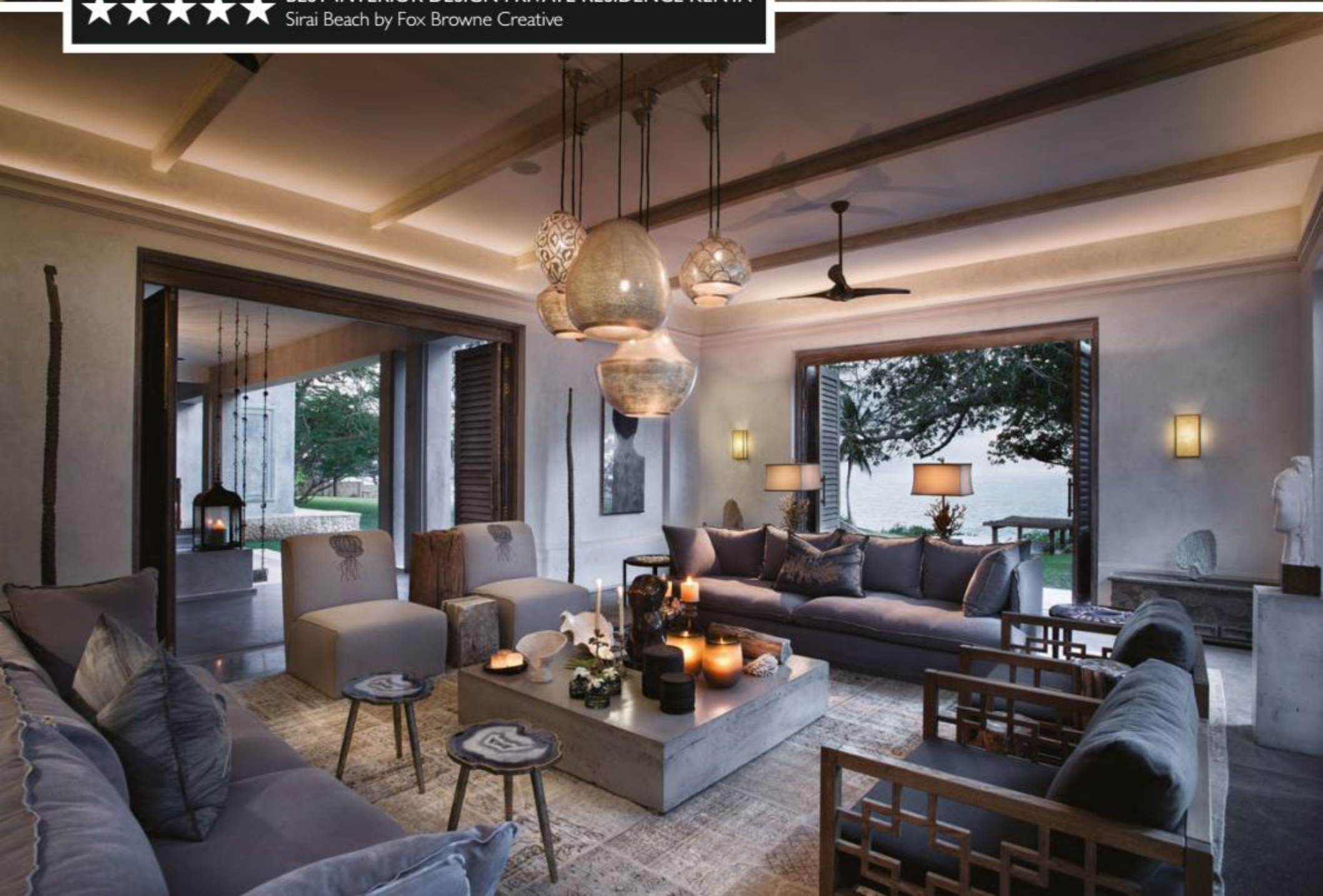
t: +231 777 567 670

e: jerry.onana@cesafliberialtd.com

w: www.cesafliberialtd.com



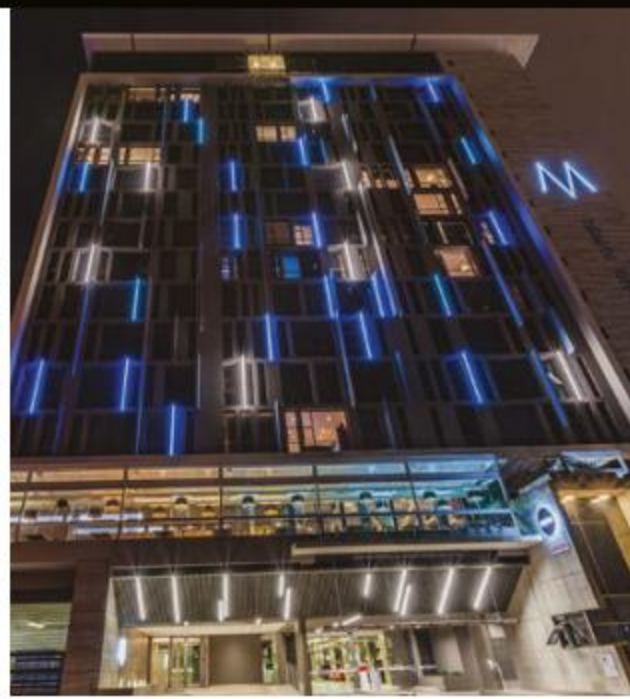
BEST INTERIOR DESIGN PRIVATE RESIDENCE KENYA
Sirai Beach by Fox Browne Creative







Masingita Towers



Masingita Mall



MASINGITA PROPERTIES IS part of the Masingita Group of Companies, a leader in large-scale retail property development in South Africa. The company has won awards for two of its latest projects. Masingita Towers is a contemporary, urban styled, signature apartment project with its top lofts and penthouses on the 15th floor prominently placed on the magnificent horizon of the Sandton highveld skyline.

Consisting of 174 units with a full range of amenities and services, the building's sculpted form was designed from the inside out. The generous outward facing bedrooms and living rooms were then further refined through a sculptural exterior skin layered in sun screens, expansive glass, stone cladding and aluminium framed window walls.

The Masingita Mall project required a 30,000m² extension to the existing centre, totalling the GLA at 42,000m². On completion, it will be the largest shopping centre in the Mopani District. Its architectural design is rooted in nature and the landscape. Inspiration was drawn from the trees and the shaded canopies they create. This is evident through the mall's sweeping roof emulating the tree tops with structural columns representing tree trunks.

The theme is carried through the interiors of the mall where diffused natural light, as if through a tree canopy, enhances the shopping experience. Visually linking the interior and exterior spaces, an al-fresco dining area covered by a curved roof stretches out towards the edge of a natural riverine. This further engages nature and softens the boundaries between the mall and its surroundings.

Masingita Properties

41 West Street, Houghton Estate,
Johannesburg 2198, South Africa
t: +27 11 646 0033
e: info@masingitagroup.co.za
w: www.masingitagroup.co.za

★★★★★ BEST RESIDENTIAL HIGH-RISE DEVELOPMENT SOUTH AFRICA Masingita Towers

by Developers: Masingita Properties Developers Consultant: ICS Brochure Design: Pattichides and Partners

★★★★★ BEST RETAIL DEVELOPMENT SOUTH AFRICA Masingita Mall

by Developers: Masingita Properties Developers Consultant: ICS Brochure Design: Pattichides and Partners



HORTELA DESIGN DE INTERIORES was commissioned to design the award-winning Zimbabwe House 720 – Colours of Life. The residence is located in an affluent neighbourhood of Maputo in Mozambique. Originally built in a colonial style, the house is a three-storey building surrounded by a large garden. Owned by a couple with two young children, their brief was to treat each room's design uniquely giving the house a sense of cohesion.

The clients' specific requirement was for privacy hence each room is segregated to allow different activities to take place without disturbing each other. On entry, the visitor is ensconced in a relaxed tropical jungle style foyer where a neutral colour palette is

complemented with lush tropical plants. Each room has been tastefully decorated throughout using modern furnishings and neutral flooring, which draws the eye to the striking wall coverings and object's d'art, which the family were keen to display.

A beautiful dining area opens out to the outside pool thus providing the perfect place for the couple to host parties and enjoy family meals. Natural sunlight streams into this room and enhances the rustic style furnishings used throughout.

The clients' wish was to add ethnic character and elegance to enhance this colonial style home. Hortela Design de Interiores has created a stunning, elegant and functional home, which has surpassed the clients' expectations.



**AFRICAN
PROPERTY
AWARDS**
INTERIOR DESIGN

2019-2020

Hortela Design de Interiores

Avenida Kim Il Sung nº 279 B, Maputo,

Mozambique

t: +258 843 035 469

e: design.interiores@hortela.co.mz

w: www.hortela.co.mz

★★★★★ BEST INTERIOR DESIGN PRIVATE RESIDENCE MOZAMBIQUE Zimbabwe House 720 - Colours of Life by Hortela Design de Interiores



Al Rayyan Village



Prime Square



Fadi Kreiker
Board Member, CEO



**Prime Lands
Real Estate Development**

Al Rayyan Villager Villa 107 & 109,
Jassim Bin Hamad St, Madinat Khalifa
PO Box 10802
Doha, Qatar, UAE
t: +974 4413 0950
e: info@primelands.qa

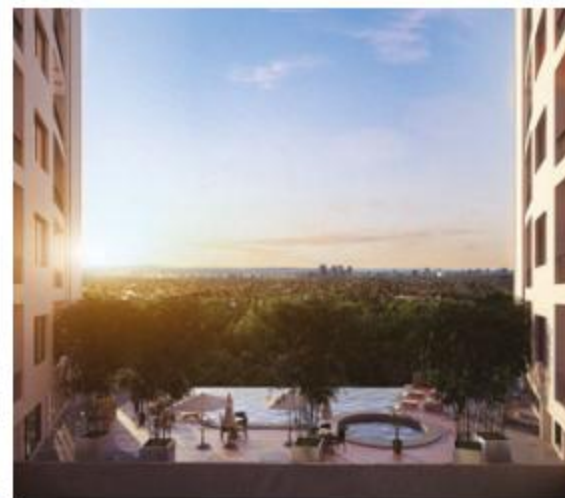
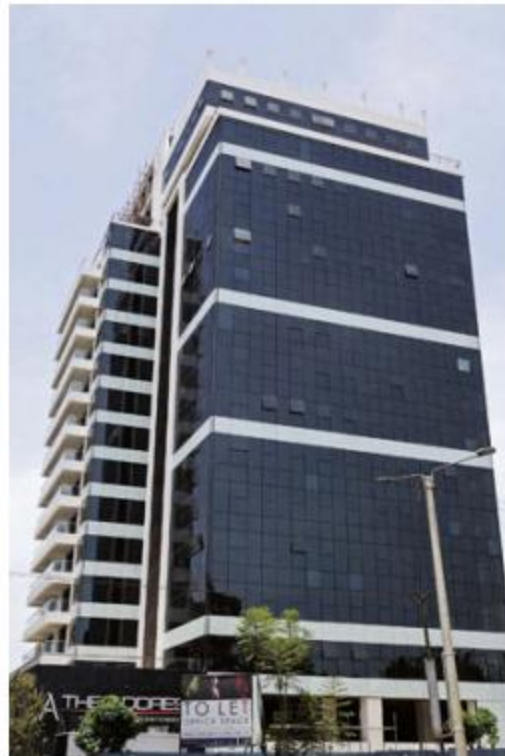
BASED IN DOHA, Qatar, Prime Lands Real Estate Development has won awards for two of its latest projects. Al Rayyan Village comprises 383 villas in a range of four different types in Qatar's most desirable location near West Bay. As Doha's newest luxury gated address, it offers sophisticated craftsmanship, high-end furnishings, advanced security and an eco-friendly design.

Created to be a 'home away from home', Al Rayyan Village is a carefully master planned environment. It harmoniously blends gardens, walkways and water features with a sophisticated clubhouse, children's playgrounds and a host of leisure facilities within walking distance of every property. Cooling open spaces have also been encapsulated in the design of each villa via courtyards and terraces.

Prime Square is a luxurious, high-rise office tower owned by Prime Lands Group. The development, which is focused on corporate tenancy and high-end retailers, offers tenants an exceptionally attractive location. Close to the renovated Msheireb area and on the main artery leading to Doha's new International Airport, it is strategically placed for convenient access.

Each floor has been subdivided into a number of zones, sized to meet the needs of smaller tenants. At the same time, multiple zones can easily be combined if required. A six-level underground car park has also been added for tenants and visitors. Providing a multi-purpose business hub, Prime Square's amenities cater for the health and well-being of its tenants with a fitness facility, spa, shower and locker rooms, indoor and outdoor dining areas and stylish coffee shops.

★★★★★ BEST RESIDENTIAL PROPERTY QATAR Al Rayyan Village by Prime Lands Real Estate Development
★★★★★ BEST OFFICE DEVELOPMENT QATAR Prime Square by Prime Lands Real Estate Development



HAYER ONE IS a real estate development company in Kenya that is continuously striving for benchmark quality by deploying cutting-edge technology, superb construction materials and skilled professionals. The company has impressively won four awards, two each for the following projects.

'The Address' features outstanding design, spectacular views and flexible floor-plates, making it the most desirable office space in Westlands, Nairobi for decades to come. Every aspect from functional and aesthetic building design to advanced sustainability features has been created to make each working day more inspired and productive. Its architectural style is designed so that each office has minimal standalone columns, offering optimum space

and enabling unobstructed views. Specialised floor-to-ceiling glass also allows optimal natural light without raised levels of heat or sound.

'The Marquis' is a residential high-rise development in Kileleshwa bordering the leafy suburb of Lavington. It comprises a range of two, three and four-bedroom apartments, penthouses and garden terrace apartments featuring premium finishes and intelligent layouts. Its distinctive two towers, atop a multi-level carpark, create a stunning presence in the city's skyline. The towers form a 'V' shape, at the bottom of which is a luxurious deck with an infinity swimming pool. A pinnacle of modern architecture, the design extends the interior living spaces to the outdoors through terraces and balconies whose subtle curvaceous protrusions add artistic depth to the angular façade.



AFRICAN
PROPERTY
AWARDS

2019-2020

Hayer One Limited

PO Box 66709-00800

Nairobi, Kenya

t: +254 721 399 399

t: +254 786 399 339

e: info@hayerone.com

w: www.hayerone.com

★★★★★ BEST COMMERCIAL HIGH-RISE ARCHITECTURE KENYA The Address by Hayer One Limited

Award Winner COMMERCIAL HIGH-RISE DEVELOPMENT KENYA The Address by Hayer One Limited

Award Winner RESIDENTIAL HIGH-RISE DEVELOPMENT KENYA The Marquis by Hayer One Limited

Award Winner RESIDENTIAL HIGH-RISE ARCHITECTURE KENYA The Marquis by Hayer One Limited



**Molders -
Design & Build Limited**

2 Nii Noi Kwame Street, Dzorwulu,
Near Skylinks Technical Institute
Accra, Ghana
t: +233 20 511 6095
t: +233 50 552 1322
e: info@moldersdb.com
e: info@moldersgroup.com
w: www.moldersdb.com
w: www.moldersgroup.com

MOLDERS – DESIGN & BUILD is a Ghanaian firm with a dedicated team of more than 20 professionals whose broad expertise ranges from architecture to engineering. Its award-winning project, The Moro Residence, is a contemporary dwelling of 280m² on a 585m² site in Ashaley Botwe, a suburb of Ghana's capital city, Accra.

The two-storey property's design is based on the principles of minimalism, sustainability and tropical architecture. Featuring a well-lit interior, large windows and a gorgeous exterior design with green roofs, large overhangs, recessed walls and openings on opposite walls, the house provides optimal thermal comfort to its inhabitants. Sustainability elements include

solar panels on the roof as well as a shingled roofing system with a gentle five-degree slope and gutters placed at the eaves to optimise rainwater harvesting.

The Moro Residence's floor plan is rectangular, with a smaller square located at the extreme end of the front wall to accommodate a security guard. Like its interior, the house has a white-coloured exterior that pops against its natural green surroundings. Façades are arrayed in panels of 8mm tempered glass and black coated steel meshes to add to the décor and add a dash of colour to the otherwise neutral building. Plants trailing off the roof also help to blur the straight form of the structure, while also cooling the building and drawing fresh air into the spaces.

Award Winner ARCHITECTURE SINGLE RESIDENCE GHANA The Moro Residence by Molders - Design & Build Limited



MARIAM EL ALAOU, an award-winning interior designer based in Beirut, Lebanon, was commissioned to transform RN Residence, an apartment belonging to a couple with two young daughters. Her motto is: Our mission is to positively influence the lives of our customers by shaping their spaces with timeless designs and gracing their homes with the style, sophistication, elegance and warmth that capture the essence of their personalities.

The brief was to create a timelessly stylish, luxurious and functional living area which would fully utilise the available space for both the family and entertaining on a large scale. Although the couple have very different style preferences, some commonalities emerged that helped the design process.

Drawing inspiration from their personalities and lifestyle, a concept of 'where two opposites meet' evolved. This emphasises contrast, intersection, interlocking connection, pairing and symmetry across all furniture, textiles and materials. Being a believer that an interior is the natural projection of the soul, the resultant design naturally features a graceful combination of interconnected spaces that progress seamlessly from the television area to the main entertaining area and finally to the dining area.

Neutral tones have been used to allow the finer details of the furniture and metal elements to shine through while also enabling Mariam El Alaoui to be creative with textures and patterns. Light and bright walls also prove more reflective, making the space feel open and airy and maximising the natural light.



2019-2020

Mariam El Alaoui

Khanshara Street, Dumas Building

Mar Mikhael - Nahr

Beirut 1100, Lebanon

t: +961 324 1083

e: makinterior1@gmail.com

w: www.makinterior.com

★★★★★ BEST INTERIOR DESIGN APARTMENT LEBANON RN Residence by Mariam El Alaoui



Al Nakhla City Company

PO Box 7828, Qurtubah,
Riyadh 13244 Wasel,
Kingdom of Saudi Arabia
t: +966 11 511 6000
e: info@alnakhla.sa
w: www.alnakhla.sa

AWARD-WINNING Al Nakhla Residential Resort in Saudi Arabia is a uniquely creative residential and commercial project. Following an extensive web survey distributed to a large number of expats in Riyadh, the resort’s design was based on its findings.

The entrance to the resort is via The Boulevard which includes the administration building, various maintenance facilities, visitor’s parking and the entrance to Danube Hypermarket, the largest in the Middle East. Beyond the central gate, the residential zone begins where facilities, shops, services, satellite pools, villas and apartments are located across 20 towers with apartments and nine different zones with villas.

Each residential zone has an average of 60 villas with exclusive facilities such as a swimming pool, parking, seating, a gathering

area and pedestrian access. Al Nakhla Towers offer different types of one and two-bedroom apartments for a short stay accommodation of corporate clients or friends and family of residents while visiting Riyadh. The Royal Villas Zone meets the needs of senior executives and their families. There are 10 Royal Villas, each with a private swimming pool, private garden, four bedrooms, five bathrooms and separate maid and driver accommodation.

The Central Park is a further important element of the resort. This outdoor space has remarkable landscaping and design, blending greenery with impressive water features and structural ingenuity. Today, Al Nakhla Residential Resort is the happiest Western community in Riyadh with a waiting list for many popular unit types as people want to join this unique community surrounded by luxury, comfort and like-minded neighbours.

★★★★★ BEST RESIDENTIAL DEVELOPMENT SAUDI ARABIA Al Nakhla Residential Resort by Al Nakhla City Company



KIREI STUDIO was launched in 2010 by interior designer Nathalie Ryan whose creations reflect years of experience in Haute-Couture by transposing emotions into the world of architecture and interior design, through the subtle interplay of colour, matter and light. Acqua Di Parma – Dubai Mall, the brand's first boutique in the Middle East, is an award-winning project by Kirei Studio. It is a joyful interpretation of the Acqua di Parma brand values, aimed at offering a fresh and modern luxury retail experience that appeals to both male and female customers.

Opened in May, 2018, the 50m² boutique is characterised by an enveloping design. Natural and precious materials are complemented by

Parma bright yellow, the symbolic colour of the brand, to communicate the quintessential vibrant Italian style. Kirei Studio has also emphasised the brightness that is the 'leitmotif' of the store by alternating wooden grooves with textile coverings referencing the sun's artistic rays of light.

Further reflecting Acqua Di Parma's Italian roots, the design features yellow armchairs and oak floors that pair perfectly with timber elements and a central ringed chandelier. The boutique also includes a barber corner, Barbiere, with a custom-made mosaic floor by Sicis. This sublime boutique truly reflects the values of Acqua Di Parma as well as those of Kirei Studio – elegance, individuality and a taste of savoir-faire.



INTERNATIONAL
PROPERTY
AWARDS
DUBAI
INTERIOR DESIGN

2019-2020

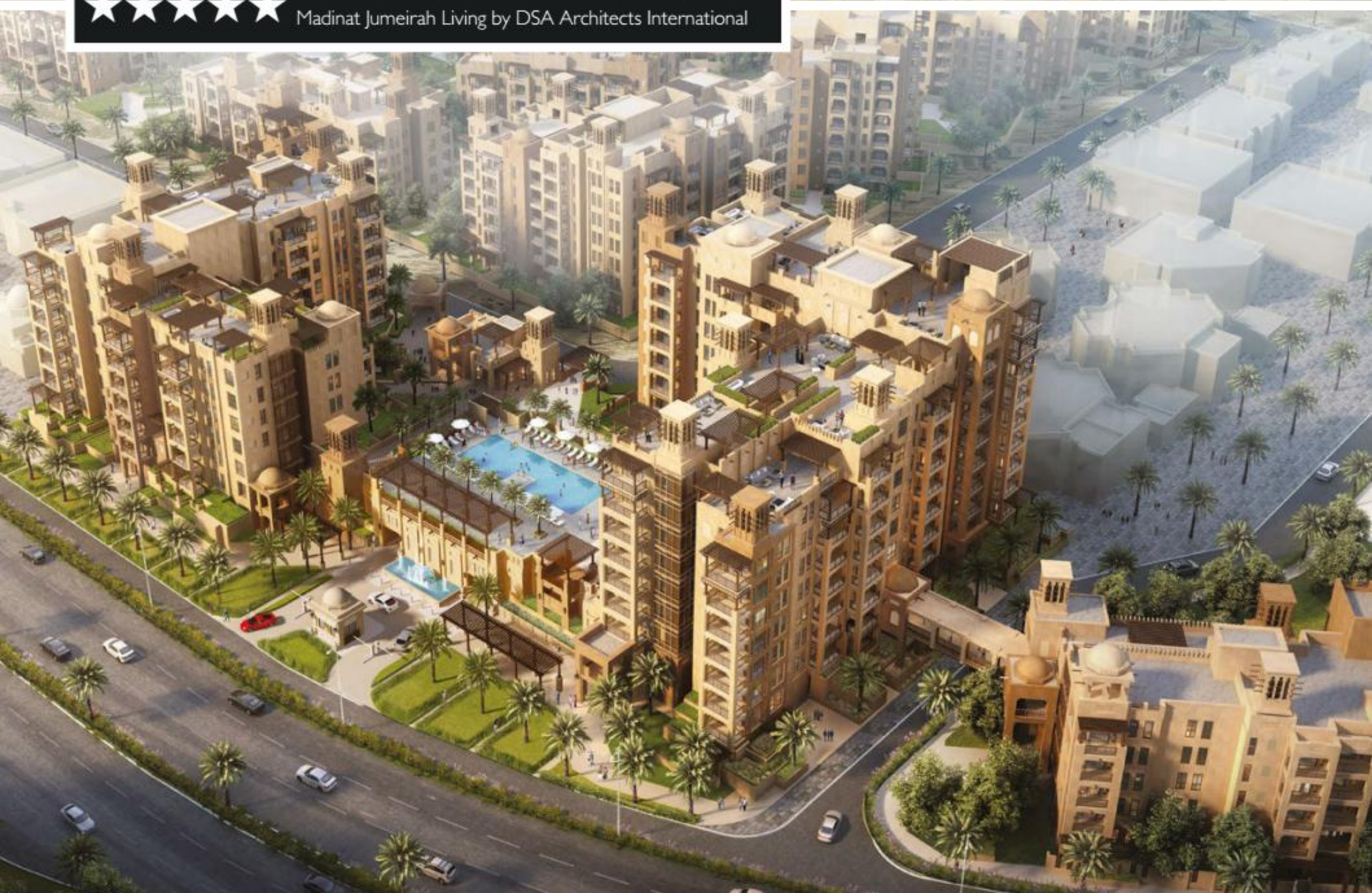
Kirei Studio

45 rue Cardinal Lemoine
75005 Paris, France
t: +33 6 16 31 39 33
e: contact@kirei-studio.fr
w: www.kirei-studio.com

★★★★★ BEST RETAIL INTERIOR DUBAI Acqua Di Parma - Dubai Mall by Kirei Studio



★★★★★ BEST ARCHITECTURE MULTIPLE RESIDENCE DUBAI
Madinat Jumeirah Living by DSA Architects International







Abey Kitchen

FR Kitchen



MAWAD IS ONE of Lebanon's most trusted and reliable finishing materials suppliers, specialising in designer kitchens. Two of its latest award-winning designs are featured here. Abey Kitchen is located in a 100 year-old former boarding school in one of the prettiest villages in Mount Lebanon. The client has renovated the derelict building into a private residential villa, retaining its traditional features but adding modern and luxurious finishes.

Upon entering the contemporary kitchen, an abundance of daylight floods into the space through large windows which also optimise the surrounding views of nature. Fitted with top quality Velvet Black Nobilia cabinetry and black counter tops, it features clean lines and

stylish glass framed doors. Blue mosaic tiles then provide a classical modern finish, adding contrast and also reflecting the colour of the sky through the windows.

FR Kitchen is within a large apartment in 3BEIRUT, an exclusive project in the city consisting of three iconic towers. The Zeyko kitchen is equipped with a centre island designed to seat 12 as a dining table and a sliding door to open out into the dining and living areas. Featuring simple white cabinetry with clean lines, the addition of black counter tops gives an elegant, contemporary look. A small niche of black painted glass creates a strong design impact and adds to the overall Art Deco style where alignment and symmetry have been major elements.

**Mawad S.A.R.L
for Trade and Construction**

Weavers Center, Clémenceau Street,
Beirut, Lebanon
t: +961 | 37 77 38
f: +961 | 37 77 38
e: info@mawadgroup.com
w: www.mawadgroup.com

★★★★★ BEST KITCHEN DESIGN LEBANON Abey Kitchen by Mawad S.A.R.L for Trade and Construction
Award Winner KITCHEN DESIGN LEBANON FR Kitchen by Mawad S.A.R.L for Trade and Construction



ESTABLISHED IN 1979, Dar Al Omran is a group of building and infrastructure consultants based in Riyadh. With a strong regional presence and local knowledge, it has succeeded in establishing a solid reputation in the world of architecture and engineering consultancy. The group has won two awards for its project Development of Al Bujairi Heritage Quarter in Ad Diriyah.

This 23,000m² multi-use development includes an office building, retail and outdoor souq, a small mosque and parking for 230 cars for retail customers in the basement levels. Built on a site of 54,354m² in close proximity to Turaif vernacular village, its aim is to revive the Albjeri area through an understanding of the place and its history. Starting with the past, through the present

and into the future, each era has been given the opportunity to express its important role in the wheel of time.

The design combined a contemporary outdoor experience with historical values, satisfying all required areas and functions while giving the retail experience a twist of discovery. Regional materials such as palm leaves have been used for the roof and clay and local stones for the external walls. The design enhances the penetration of daylight into the building by using courtyards. These increase the occupants' connection with the outdoors, reinforce circadian rhythms and reduce the use of electricity. Shading elements and canopies together with recessed windows, high external walls and roof thicknesses also improve the building's thermal comfort.



ARABIAN
PROPERTY
AWARDS

2019-2020

**Dar Al Omran
Engineering Consultants - KSA**

Abu Bakr Arrazi Street, Kattan Plaza
P.O.Box 8187, Riyadh 11482, Saudi Arabia

t: +966 11 465 2189

f: +966 11 464 0081

e: dao-saudia@daralomran.com

w: www.daralomran.com

Award Winner RETAIL ARCHITECTURE SAUDI ARABIA Development of Al Bujairi Heritage Quarter by Dar Al Omran Engineering Consultants - KSA

Award Winner RETAIL DEVELOPMENT SAUDI ARABIA Development of Al Bujairi Heritage Quarter by Dar Al Omran Engineering Consultants - KSA



Baghdad Residences



Baghdad Tower



Majidi Mall



iki design group

Nispetiye Mah. Aytar Cad.
Aydin sk. Dagli Apt. No : 4
34340 Levent
Istanbul, Turkey
t: +90 212 278 74 44
e: iki@ikidg.com
w: www.ikidg.com

ESTABLISHED IN 1995, iki design group is an architecture and design company that is committed to developing dynamic and interactive space arrangements that are sensitive to culture and climate. The firm has won an impressive five awards across the following three projects in Iraq.

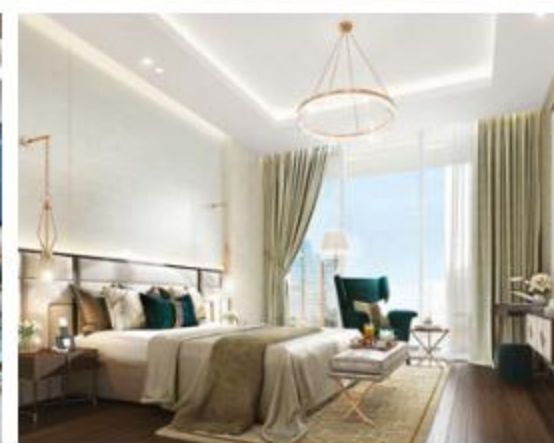
Baghdad Tower is an iconic high-rise development comprising a mix of offices, hotel units, serviced apartments and retail areas. These different entities are carefully arranged around various circulation schemes throughout the upper floors of the tower. The main design inspiration was giving the city a new rising hope, resulting in a unique structure on the Baghdad skyline.

The brief for Baghdad Residences was to create a high standard of living for residents

throughout multiple units. Baghdad's urban grid pattern inspired the design which features residential towers attached to each other, yet staggered to allow openings on all four sides. Following vastu principles in their alignment, self-shadowing façades dramatically reduce heat absorption.

Majidi Mall boasts a new architectural style offering a harmony between classic and modern lines in order to emphasise the historical assets of Erbil city with a contemporary edge. The 145,000m² project will accommodate stores, an anchor supermarket, cinema, entertainment areas, restaurants and cafés. Shoppers will also be enticed outside of the mall's interiors into the surrounding sequence of spaces, forming a new public heart for the city.

- ★★★★★ BEST COMMERCIAL HIGH-RISE DEVELOPMENT IRAQ Baghdad Tower by iki design group
- Award Winner COMMERCIAL HIGH-RISE ARCHITECTURE IRAQ Baghdad Tower by iki design group
- Award Winner ARCHITECTURE MULTIPLE RESIDENCE IRAQ Baghdad Residences by iki design group
- Award Winner RETAIL ARCHITECTURE IRAQ Majidi Mall by iki design group
- Award Winner RETAIL DEVELOPMENT IRAQ Majidi Mall by iki design group



A RAB ARCHITECTS' PROJECTS encourage a synergy between their design and engineering processes creating distinctive, exceptional buildings, which resonate with their surroundings and environment. City Centre Twin Towers in the Seef District of Bahrain is an award-winning example of this philosophy.

Soaring 43 floors high, the iconic towers consist of 594 apartments across a 100,000m² built-up area. They have been designed to symbolise elegance in an architectural form while also respecting the project's modern surroundings which include Bahrain's most significant shopping malls. Arab Architects has also designed the towers so that they can easily be converted into a hotel in the future if required as per the client's request.

One of the major architectural innovations is the 55-metre long mast – the tallest in the Kingdom. Positioned on top of each tower, it provides resistance against all design loads while an RGB LED light on the crown can be activated to celebrate special occasions.

The residential units vary throughout the buildings and offer eight different types – all of which are both luxurious and hospitable. They range from studios, one, two and three-bedroom options to various penthouses.

A great number of balconies have been added to emphasise the alternating views of the city and the sea. All residents have access to facilities that complement their lifestyle including a gym, spa, kids' club, theatre, party hall, multi-purpose hall and a swimming pool.



2019-2020

Arab Architects

Building 52, Road 912, Block 309

Salmaniya Road

Manama, Kingdom of Bahrain

t: +973 17243992

e: info@arabarchs.com

w: www.arabarchs.com

★★★★★ BEST RESIDENTIAL HIGH-RISE ARCHITECTURE BAHRAIN City Centre Twin Towers by Arab Architects



Mr Hatem Attiya



Anantara Penthouse



Boss Tower



Vetro Plaza



El-Terrace Hospitality Tower



El-Terrace Hospitality Tower



El-Terrace Hospitality Tower



El-Terrace Hospitality Tower



Hatem Attiya - Darwasa Designs

71 Olaya Street, PO Box 66058
 Riyadh, 11576
 Saudi Arabia
 t: +966 11 464 61 37
 e: info@darwasa.com
 w: www.darwasa.com

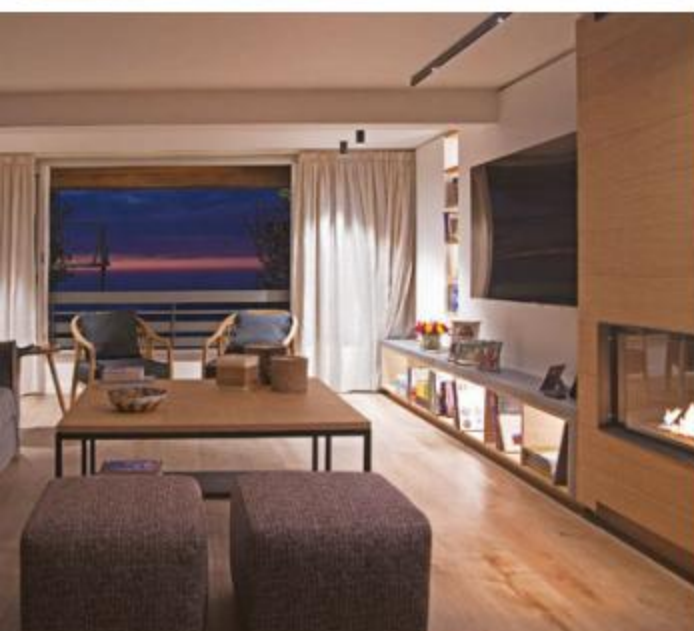
HATEM ATTIYA IS the founder and managing partner of Darwasa Designs, an architectural and interior design studio founded in 2000 and based in Riyadh, Saudi Arabia. The multi-award winning company has accrued two further accolades for its project El-Terrace Hospitality Tower in Riyadh.

The client's brief called for a multi-storey building on a 2,600m² plot to house various types of hospitality outlets with open-air seating and dining areas as well as a few retail outlets and children's entertainment areas. The aim of its design was to create a contemporary architectural landmark to become the ultimate gourmet destination for Riyadh.

The approved design features large balconies and terraces and two separate entrance lobbies – one for the commercial part of the building with its retail stores and children's areas, the other to the hospitality side with restaurants, lounges and cafes. The building's design takes an organic form with beautiful curvy lines that extend over all 12 floors. It was this sculpture-like form and the uniqueness of each terrace on every floor which inspired the client to name the project El-Terrace.

Over the last five years, Darwasa Designs has completed award winning projects that varied from Leisure Retail architecture to residential and hospitality interior design, driven by the quest to provide unique, quality design that enhances the well-being of users.

★★★★★ BEST LEISURE ARCHITECTURE SAUDI ARABIA El-Terrace Hospitality Tower by Hatem Attiya - Darwasa Designs
 Award Winner LEISURE DEVELOPMENT SAUDI ARABIA El-Terrace Hospitality Tower by Hatem Attiya - Darwasa Designs



THE WELL-ESTABLISHED firm, NS&A, covers all aspects of design across the construction and planning process. Its projects are located in Lebanon as well as in some Arab and European countries and include the award-winning Chalet in the Mountain. Located in the Lebanese mountains and overlooking the ski slopes on one side and with the breath-taking valley views on the other, the property is in a newly renovated high-end residential compound named '3S'.

Initially a core and shell space with a tiny stairway linking the four levels, the client's brief required NS&A to transform the chalet's interiors into a genuinely cosy environment. The aim was to create a warm and welcoming

place where friends and family could meet to spend relaxing weekends around the fireside in winter and the poolside terrace in summer.

A structural column in the centre of the space was removed and replaced by a structural 'H' beam drop, covered in wood. This has opened up the space beautifully and enabled a chimney element to become the centre piece of the chalet. By demolishing the existing stairs and relocating and replacing it with steel structural elements, a special relationship has been created between all floors, both physically and visually. Natural materials such as wood on the walls, solid stone floors and stone bricks around the bar all add to the chalet's stylish yet homely ambience.



2019-2020

NS&A

Amatoury Building, 1st floor
107 Camille Chamoun Street
Sin El Fil, Lebanon
t: +961 1 490 216
e: info@nsanda.com
w: www.nsanda.com

Award Winner INTERIOR DESIGN APARTMENT LEBANON Chalet in the mountain by NS&A



BEST MIXED-USE DEVELOPMENT DUBAI
MAG City by MAG Property Development LLC





Dubai, Africa & Arabia Winners 2019-2020

DUBAI

Architecture Multiple Residence

★★★★★ Madinat Jumeirah Living by DSA Architects International

Award Winner Jumeirah Luxury by Jumeirah Luxury Living LLC.

Award Winner J-One Mixed Use Residential Complex by QHC Architects & Engineers

Architecture Single Residence

★★★★★ Bayt Singue Sabour by Claudio Modola Design

Award Winner RM Villa by LW Design

Award Winner Private Villa - Parkways, Dubai Hills Estate by XBD Collective

Bathroom Design

Award Winner Burj Khalifa Bathroom by Brian Leib Interior Design

Commercial High-rise Development

★★★★★ Ciel Tower by The First Group

Commercial Property Agency/Consultancy

★★★★★ JLL

Award Winner CBRE

Developer Website

Award Winner www.jumeirahluxuryliving.com by Jumeirah Luxury Living LLC.

Development Marketing

★★★★★ Private Residences Managed by Dorchester Collection by Fifth Estate

Award Winner SIs Dubai by Fifth Estate

Award Winner Sobha Hartland by Sobha Realty

Hotel Architecture

★★★★★ Ciel Tower by The First Group

Award Winner Aloft City Centre Deira by Brewer Smith Brewer Group

Hotel Interior

★★★★★ W Dubai - The Palm by DWP Design Worldwide Partnership

Award Winner The Atlantis Imperial Club Lounge

by Allen Architecture Interiors Design - AAID

Interior Design Apartment

★★★★★ Burj Khalifa Penthouse by Brian Leib Interior Design

Award Winner Sharjah Apartment by Zen Interiors LLC

Interior Design Private Residence

★★★★★ Private Villa - Emirates Hills V by XBD Collective

Award Winner Villa J27, Frond J, The Palm Jumeirah

by Da Fonseca Interior Design LLC

Award Winner Al Barari by Zen Interiors LLC

Interior Design Show Home

Award Winner Volante by Zen Interiors LLC

Leisure Architecture

Award Winner Sport Society by DLR Group

Leisure Development

★★★★★ Sport Society by Viva City

Dubai (cont.)

Leisure Interior

★★★★★ The Gym by Brian Leib Interior Design

Award Winner Torno Subito by Bishop Design by Paul Bishop

Award Winner Wavehouse by Bishop Design by Paul Bishop

Award Winner Crank by Broadway Interiors

Mixed-use Architecture

★★★★★ Dubai Commercity by P&T Architects and Engineers

Award Winner Al Seef (The Contemporary Area) by IO Design

Mixed-use Development

★★★★★ MAG City by MAG Property Development LLC

Award Winner Jumeirah Luxury by Jumeirah Luxury Living LLC.

New Hotel Construction & Design

★★★★★ Ciel Tower by The First Group

Office Interior

★★★★★ Revonic by Swiss Bureau Interior Design

Award Winner Dubai Holding by Allen Architecture Interiors Design - AAID

Award Winner General Secretariat of Cabinet by Kart Group FZ-LLC

Public Service Interior

Award Winner DIFC Services by Opaal Interiors LLC

Award Winner Diac - Conference Center by Swiss Bureau Interior Design

Real Estate Agency Marketing

★★★★★ HMS homes Real Estate

Award Winner Aqua Properties

Real Estate Agency Single Office

★★★★★ HMS homes Real Estate

Award Winner Aqua Properties

Real Estate Agency Website

★★★★★ www.luxhabitat.ae by Luxhabitat

Award Winner www.downtowninternational.com by Downtown International Real Estate

Residential Development

★★★★★ Gemini - Splendor by Gemini Property Developers

Award Winner Jumeirah Luxury by Jumeirah Luxury Living LLC.

Award Winner Sobha Hartland by Sobha Realty

Residential High-rise Architecture

★★★★★ Ciel Tower by The First Group

Residential High-rise Development

Award Winner Symphony by Gemini Property Developers

Award Winner No.9 by Select Group

Residential Property

Award Winner Jumeirah Luxury by Jumeirah Luxury Living LLC.

Retail Interior

★★★★★ Acqua Di Parma - Dubai Mall by Kirei Studio

AFRICA

Algeria

Hotel Architecture

Award Winner Hyatt Regency Algiers Airport
by Fabris & Partners architetti

Mixed-use Architecture

★★★★★ C.I.C.- Centre International des Conferences
by Fabris & Partners architetti

Mixed-use Development

★★★★★ C.I.C.- Centre International des Conferences
by Fabris & Partners architetti

Mixed-use Interior

★★★★★ C.I.C.- Centre International des Conferences
by Fabris & Partners architetti

New Hotel Construction & Design

★★★★★ Hyatt Regency Algiers Airport by Fabris & Partners architetti

Public Service Architecture

★★★★★ Terminal West, Aeroport d'Alger by Llewelyn Davies

Egypt

Commercial Property Agency/Consultancy

Award Winner JLL

Interior Design Private Residence

★★★★★ Homely (Residential Penthouse Sodiq Eastown)
by Perception for Design & Contracting

Lettings Agency

★★★★★ Sharm El Sheikh Real Estate

Real Estate Agency Single Office

★★★★★ Sharm El Sheikh Real Estate

Ethiopia

Hotel Interior

Award Winner Hyatt Regency Addis Ababa by WA International

Mixed-use Architecture

Award Winner Grandview Addis Mixed Use Development
by Bentel Associates International and MDM Developers

Ghana

Architecture Multiple Residence

★★★★★ West Cantonments Apartments by Devtraco Plus

Award Winner Riviera Residence by Beaufort Properties

Architecture Single Residence

Award Winner The Moro Residence by Molders - Design & Build Limited

Mixed-use Architecture

★★★★★ West Cantonments Apartments by Devtraco Plus

Residential Development

Award Winner Riviera Residence by Beaufort Properties

Kenya

Commercial High-rise Architecture

★★★★★ The Address by Hayer One Limited

Commercial High-rise Development

Award Winner The Address by Hayer One Limited

Development Marketing

★★★★★ Deepark Karen by Redhouse Digital Limited

Interior Design Private Residence

★★★★★ Sirai Beach by Fox Browne Creative

Mixed-use Architecture

★★★★★ Two Rivers Development
by Two Rivers Development

Mixed-use Development

★★★★★ Two Rivers Development by Two Rivers Development

New Hotel Construction & Design

★★★★★ Marijani - Zanzibar by Trident Estates Limited

Public Service Interior

★★★★★ Mpesa Foundation Academy
by Design Partnership Ltd

Residential Development

★★★★★ Five Star Paradise, Runda
by AMS Properties Ltd

Residential High-rise Architecture

Award Winner The Marquis by Hayer One Limited

Residential High-rise Development

Award Winner The Marquis by Hayer One Limited

Retail Architecture

Award Winner Two Rivers Lifestyle Centre
by Two Rivers Development

Retail Development

★★★★★ Two Rivers Lifestyle Centre by Two Rivers Development

Liberia

Office Architecture

★★★★★ Executive Headquarters by National Social Security
and Welfare Corporation (NASSCORP) and KRU Workshop, LLP

Office Development

Award Winner Executive Headquarters by National Social Security
and Welfare Corporation (NASSCORP) and CESAF

Office Interior

Award Winner Executive Headquarters by National Social Security
and Welfare Corporation (NASSCORP) and IC Interior

Madagascar

Public Service Architecture

Award Winner Renovation of Housseini Madressa by One Arch Ltd

Madagascar (cont.)

Public Services Development

Award Winner Renovation of Housseini Madressa by One Arch Ltd

Mauritius

Apartment/Condominium

★★★★★ Lorlamer by Edenrock Property Developments Ltd

Award Winner Legend Hill Resort by MJ Developpement

Architecture Single Residence

★★★★★ M8 House by L8 Studio

Kitchen Design

Award Winner JP's House by Neoscenes Ltd

Leisure Development

Award Winner Legend Hill Resort by MJ Developpement

Leisure Interior

★★★★★ Terminal I Mauritius by Moveo Ltd

Residential Development

Award Winner Lorlamer by Edenrock Property Developments Ltd

Residential Property

Award Winner M8 House by L8 Studio

Mozambique

Interior Design Private Residence

★★★★★ Zimbabwe House 720 - Colours of Life
by Hortela Design de Interiores

Namibia

Office Interior

★★★★★ IJG Namibia Office Renovation by Leon Engelbrecht Design

Nigeria

Interior Design Private Residence

Award Winner Project A by Spring Interiors Ltd

Retail Interior

★★★★★ Project S by Spring Interiors Ltd

South Africa

Apartment/Condominium

★★★★★ Ballito Hills by Balwin Properties

Award Winner Sandton Gate The Terrace by Craft Homes (Pty) Ltd

Award Winner I Melville Road by Ganik Developments (Pty) Ltd

Architecture Multiple Residence

Award Winner WEXI by Signatura & Vivid Architects

Bathroom Design

★★★★★ Oosthuizen House by Bathroom by Design

Commercial Property Agency/Consultancy

★★★★★ JLL

Developer Website

Award Winner www.balwin.co.za by Balwin Properties

South Africa (cont.)

Development Marketing

★★★★★ WEXI by Machete Creative

Award Winner 21 on Battery by AdMakers International (Pty) Ltd

Award Winner Menlyn Link by AdMakers International (Pty) Ltd

Award Winner Ballito Groves by Rainmaker Marketing

Hotel Interior

★★★★★ Gorgeous George by Studio A / Tristan Plessis Studio

Award Winner & Beyond Phinda Homestead by Fox Browne Creative

Award Winner Four Seasons Hotel - Westcliff by Jacket Interiors

Interior Design Private Residence

★★★★★ Worker's Cottage Cape Town by Jacket Interiors

Award Winner House H by Designs by Day

Award Winner Equestrian Estate by Olala Interiors

Kitchen Design

★★★★★ Oosthuizen House by PDI - Phil Darby Interiors

Award Winner House M by Designs by Day

Leisure Architecture

★★★★★ The Blyde Riverwalk Estate by Balwin Properties

Leisure Development

Award Winner The Blyde Riverwalk Estate by Balwin Properties

Award Winner Heron Banks Golf & River Estate by Craft Homes (Pty) Ltd

Leisure Interior

Award Winner Reubens Cafe by Boogertman + Partners Architects

Award Winner Alice + Fifth by Tristan Plessis Studio

Mixed-use Architecture

★★★★★ WEXI by Signatura & Vivid Architects

Award Winner The Marc by Boogertman + Partners Architects

Award Winner Waterfall by Waterfall Management Company

Mixed-use Development

★★★★★ Waterfall by Waterfall Management Company

Award Winner Nooitgedacht Village by Nooitgedacht Village

Award Winner WEXI by Signatura

New Small Hotel Construction & Design

Award Winner Gorgeous George by Clockwork Hospitality GG (Pty) Ltd.

Office Interior

Award Winner Brick Art Construction Headquarters by Brick Art Construction

Real Estate Agency Marketing

★★★★★ Pam Golding Properties

Real Estate Agency over 20 Offices

★★★★★ Pam Golding Properties

Real Estate Agency Single Office

★★★★★ Kingstons Real Estate

Award Winner Realtors International

Real Estate Agency Website

★★★★★ www.pamgolding.co.za by Pam Golding Properties

South Africa (cont.)

Residential Development

★★★★★ WEXI by Signatura

Award Winner Mont Tremblant Estate by Galencia Property (Pty) Ltd

Award Winner Residential Development A3

by Reeflords Property Development (Pty) Ltd.

Residential High-rise Development

★★★★★ Masingita Towers by Developers: Masingita Properties

Developers Consultant: ICS Brochure Design: Pattichides and Partners

Residential Property

Award Winner Walford Estate by Galencia Property (Pty) Ltd

Retail Development

★★★★★ Masingita Mall by Developers: Masingita Properties

Developers Consultant: ICS Brochure Design: Pattichides and Partners

Retail Interior

Award Winner Dion Wired Sandton City by Dakota Design (Pty.) Ltd.

Uganda

Residential Development

Award Winner Jasmine Courts by Fakhruddin Properties Ltd

Zambia

Office Interior

Award Winner Total by Africaworks Design & Build

ARABIA**Abu Dhabi**

Commercial Property Agency/Consultancy

★★★★★ MPM Properties LLC

Award Winner JLL

Real Estate Agency Marketing

★★★★★ ADIB HQ Tower 2 by MPM Properties LLC

Award Winner District Real Estate

Real Estate Agency Single Office

★★★★★ District Real Estate

Bahrain

Hotel Interior

★★★★★ Jumeirah Royal Saray Bahrain

by WA International

Interior Design Private Residence

Award Winner Janabiya - Poolside Living by Beckett Interiors

Leisure Architecture

Award Winner Sa'ada Waterfront by Bahrain Real Estate Investment Edamah

Leisure Development

★★★★★ Sa'ada Waterfront by Bahrain Real Estate Investment Edamah

Mixed-use Development

★★★★★ Sa'ada Waterfront by Bahrain Real Estate Investment Edamah

Bahrain (cont.)

Residential Development

★★★★★ Waterbay by Bin Faqeeh Real Estate Investment Company

Residential High-rise Architecture

★★★★★ City Centre Twin Towers by Arab Architects

Residential Property

Award Winner Alsidra by Bin Faqeeh Real Estate Investment Company

Iraq

Architecture Multiple Residence

Award Winner Baghdad Residences by iki design group

Commercial High-rise Architecture

Award Winner Baghdad Tower by iki design group

Commercial High-rise Development

★★★★★ Baghdad Tower by iki design group

Retail Architecture

Award Winner Majidi Mall by iki design group

Retail Development

Award Winner Majidi Mall by iki design group

Jordan

Architecture Multiple Residence

Award Winner DABOUQ One70 by THE LAND and MASHARII

Architecture Single Residence

Award Winner The Clementine Pavilion by Mohamed Malkawi Architects

Leisure Development

★★★★★ B10 Beach Club - Ayla Oasis by Ayla Oasis Development Company

New Hotel Construction & Design

★★★★★ Hyatt Regency Aqaba Ayla Resort

by Ayla Oasis Development Company

Award Winner St. Regis Amman by Eagle Hills Jordan

Residential Development

★★★★★ Beach Apartments - Ayla Oasis

by Ayla Oasis Development Company

Retail Development

Award Winner Souq Bab Al Madinah by THE LAND and MASHARII

Kuwait

Commercial High-rise Architecture

★★★★★ Al Hamra Business Tower by Al Hamra Real Estate

Commercial High-rise Development

★★★★★ Al Hamra Business Tower by Al Hamra Real Estate

Lebanon

Architecture Single Residence

★★★★★ HD South Villa by Dori Hitti Architects

Award Winner Villa CH by 4b Architects And Consultants

Award Winner Freiha Residence by P.J.D

Lebanon (cont.)

Interior Design Apartment

★★★★★ RN Residence by Mariam El Alaoui

Award Winner Chalet in The Mountain by NS&A Sal

Interior Design Private Residence

★★★★★ Foch Pent House by May Jbara Design Studio

Kitchen Design

★★★★★ Abey Kitchen by Mawad S.A.R.L for Trade and Construction

Award Winner FR Kitchen by Mawad S.A.R.L for Trade and Construction

Oman

Sustainable Residential Development

Award Winner Ras Al Hamra Development Project

by Petroleum Development Oman - PDO

Qatar

Architecture Multiple Residence

★★★★★ Msheireb Townhouses and Apartments by Msheireb Properties

Architecture Single Residence

Award Winner Private Exterior Majlis by Luna Design LLC

Award Winner Private Villa by Luna Design LLC

Commercial High-rise Development

Award Winner UDC Tower by United Development Company

Hotel Architecture

★★★★★ Shaza Doha Hotel by Luna Design LLC

Award Winner Mondrian Doha by South West Architecture

Mixed-use Development

Award Winner The Pearl-Qatar by United Development Company

New Small Hotel Construction & Design

★★★★★ Al Muntazah Hotel by Luna Design LLC

Award Winner Muglina Hotel by Luna Design LLC

Office Architecture

Award Winner Al Jassimya Tower by South West Architecture

Office Development

★★★★★ Prime Square by Prime Lands Real Estate Development

Real Estate Agency Marketing

Award Winner Nelson Park Property LLC

Real Estate Agency Single Office

★★★★★ Nelson Park Property LLC

Residential Property

★★★★★ Al Rayyan Village by Prime Lands Real Estate Development

Sustainable Residential Development

Award Winner U07 Sustainable Residential Development by Msheireb Properties

Saudi Arabia

Architecture Multiple Residence

★★★★★ UPTOWN by Alkhoyool Alarabia for Urban Development

Saudi Arabia (cont.)

Commercial Property Agency/Consultancy

★★★★★ JLL

Development Marketing

★★★★★ UPTOWN by Alkhoyool Alarabia for Urban Development

Leisure Architecture

★★★★★ El-Terrace Hospitality Tower by Hatem Attiya - Darwasa Designs

Leisure Development

Award Winner El-Terrace Hospitality Tower by Hatem Attiya - Darwasa Designs

Office Architecture

Award Winner MIS by P.J.D

Residential Development

★★★★★ Al Nakhla Residential Resort by Al Nakhla City Company

Award Winner J One Residence by Abdul Latif Jameel Lands Co. Ltd.

Award Winner UPTOWN by Alkhoyool Alarabia for Urban Development

Retail Architecture

Award Winner Development of Al Bujairi Heritage Quarter

by Dar Al Omran Engineering Consultants - KSA

Retail Development

Award Winner Development of Al Bujairi Heritage Quarter

by Dar Al Omran Engineering Consultants - KSA

Sharjah

Hotel Architecture

Award Winner Sheraton Sharjah Beach Resort & Spa by QHC Architects & Engineers

Mixed-use Development

Award Winner Al Mamsha by Alef Group



The International Property Awards

The Mill House, Bishop Hall Lane, Chelmsford, Essex CM1 1LG, UK

Telephone: +44 (0)1245 250981

Email: info@propertyawards.net

Web: www.propertyawards.net



What have you got to show for being the best?

Take part in the world's most prestigious property awards programme, covering both commercial and residential specialities. Categories cover all aspects of construction, development, architecture, real estate, design and interiors.

Visit www.propertyawards.net now for more details, or call +44 (0)1245 250981

The International Property Awards

The Mill House, Bishop Hall Lane, Chelmsford, Essex, CM1 1LG, United Kingdom
t: +44 (0)1245 250981 e: info@propertyawards.net w: www.propertyawards.net